

3D Fence With Peach Post

3D Fence With Peach Post

Specifications						
Line Wire x Cross Wire	Hole Size	Panel Length	Panel Height	Bending No.	Common Color	Surface Treatment
4.0 x 4.0mm	50 x 100mm 50 x 200mm 55 x 200mm 75 x 150mm 100 x 300mm 6.0 x 6.0mm	2.0m 2.2m 2.4m 2.5m 2.8m 3.0m	830mm	2	Green RAL6005 Grey RAL7016 Brown RAL8019 Black RAL9005 White RAL9010	1. Hot-dipped galvanized after black wire welded 2. PVC coated after galvanized wire welded 3. PE coated after galvanized wire welded
4.5 x 4.0mm			1030mm	2		
4.5 x 4.5mm			1230mm	2		
5.0 x 4.0mm			1530mm	3		
5.0 x 5.0mm			1830mm	4		
6.0 x 5.0mm			2030mm	4		
6.0 x 6.0mm			2230mm	4		
			2430mm	4		



TL-001



TL-002



TL-003



TL-004



TL-005

Specifications						
Post View	Size	Thickness	Panel Height	Base Post	Normal Post	Surface Treatment
	50 x 70mm	1.2mm	830mm	850mm	1200mm	Galvanized tube PVC coated
			1030mm	1050mm	1400mm	
			1230mm	1250mm	1600mm	
			1530mm	1550mm	2000mm	
	70 x 100mm		1830mm	/	2400mm	
			2030mm	/	2500mm	
			2230mm	/	2800mm	
			2430mm	/	3000mm	



TL-006



TL-007



TL-008



TL-009



TL-010

3D Fence With Round Post

3D Fence With I Type Post

Specifications						
Line Wire x Cross Wire	Hole Size	Panel Length	Panel Height	Bending No.	Common Color	Surface Treatment
4.0 x 4.0mm			830mm	2		1. Hot-dipped galvanized after black wire welded 2. PVC coated after galvanized wire welded 3. PE coated after galvanized wire welded
4.5 x 4.0mm	50 x 100mm	2.0m	1030mm	2	Green RAL6005	
4.5 x 4.5mm	50 x 200mm	2.2m	1230mm	2	Grey RAL7016	
5.0 x 4.0mm	55 x 200mm	2.4m	1530mm	3	Brown RAL8019	
5.0 x 5.0mm	75 x 150mm	2.5m	1830mm	4	Black RAL9005	
6.0 x 5.0mm	100 x 300mm	2.8m	2030mm	4	White RAL9010	
6.0 x 6.0mm		3.0m	2230mm	4		
			2430mm	4		



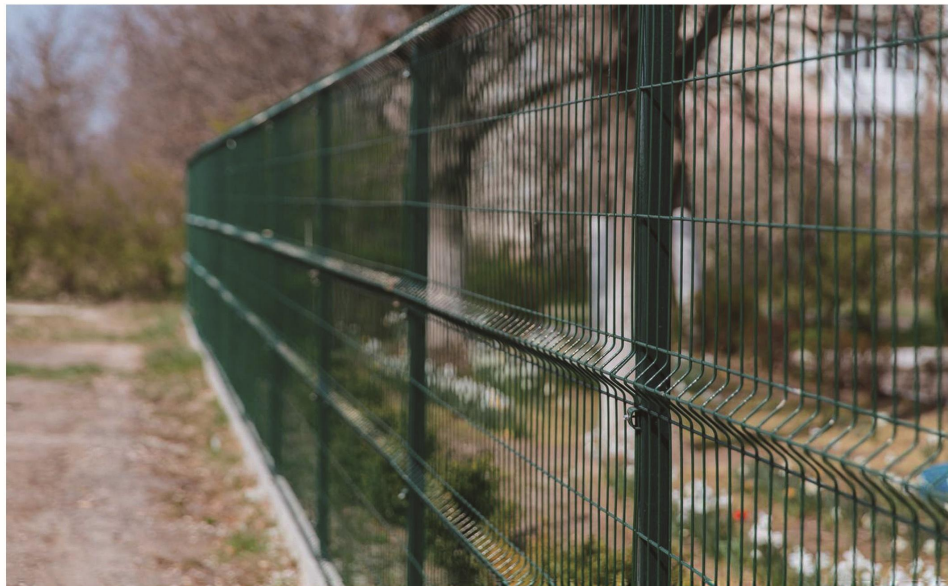
TL-011



TL-012



TL-013



TL-014

Specifications						
Post View	Size	Thickness	Panel Height	Base Post	Normal Post	Surface Treatment
Dutch Post 	Φ48mm Φ60mm	1.5mm	830mm	850mm	1200mm	1. Black tube Hot-dipped galvanized 2. Galvanized tube PVC coated
			1030mm	1050mm	1400mm	
			1230mm	1250mm	1600mm	
			1530mm	1550mm	2000mm	
Round Post 	Φ48mm Φ60mm Φ75mm	1.8mm	1830mm	/	2400mm	
			2030mm	/	2500mm	
			2230mm	/	2800mm	
			2430mm	/	3000mm	
			830mm	850mm	1200mm	
I Type Post 	55 x 65mm 65 x 95mm	1.0mm	1030mm	1050mm	1400mm	
		1.1mm	1230mm	1250mm	1600mm	
		1.2mm	1530mm	1550mm	2000mm	
		I Type Post 	44 x 70mm 55 x 100mm	1.5mm	1830mm	/
1.8mm	2030mm			/	2500mm	
2.0mm	2230mm			/	2800mm	
2.5mm	2430mm			/	3000mm	



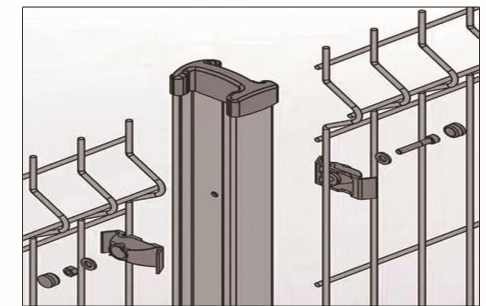
TL-015



TL-016



TL-017



TL-018

3D fence with square post

3D fence with square post

Specifications						
Line Wire x Cross Wire	Hole Size	Panel Length	Panel Height	Bending No.	Common Color	Surface Treatment
4.0 x 4.0mm	50 x 100mm 50 x 200mm 55 x 200mm 75 x 150mm 100 x 300mm	2.0m 2.2m 2.4m 2.5m 2.8m 3.0m	830mm	2	Green RAL6005 Grey RAL7016 Brown RAL8019 Black RAL9005 White RAL9010	1. Hot-dipped galvanized after black wire welded 2. PVC coated after galvanized wire welded 3. PE coated after galvanized wire welded
4.5 x 4.0mm			1030mm	2		
4.5 x 4.5mm			1230mm	2		
5.0 x 4.0mm			1530mm	3		
5.0 x 5.0mm			1830mm	4		
6.0 x 5.0mm			2030mm	4		
6.0 x 6.0mm			2230mm	4		
			2430mm	4		



TL-019



TL-020



TL-021



TL-022

Specifications						
Post View	Size	Thickness	Panel Height	Base Post	Normal Post	Surface Treatment
 Square Post	40 x 40mm	1.0mm	830mm	850mm	1200mm	1. Black tube Hot-dipped galvanized 2. Galvanized tube PVC coated
	50 x 50mm	1.1mm	1030mm	1050mm	1400mm	
	60 x 60mm	1.2mm	1230mm	1250mm	1600mm	
		1.5mm	1530mm	1550mm	2000mm	
		1.8mm	1830mm	/	2400mm	
 Rectangle Post	30 x 50mm	1.8mm	2030mm	/	2500mm	
	40 x 60mm	2.0mm	2230mm	/	2800mm	
	60 x 80mm	2.5mm	2430mm	/	3000mm	



TL-023



TL-024



TL-025

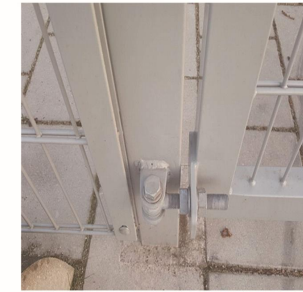


TL-026

Specifications									
Width	Height	Frame Pipe		Post Size		Mesh Inside		Tube Inside	
		Size	Thickness	Size	Thickness	Wire Dia.	Hole Size	Pipe Size	Distance
0.9m	1.0m	30 × 50mm	1.2mm	50 × 50mm	1.5mm	4mm	50 × 100mm	20 × 20mm	100mm
1.0m	1.2m			60 × 60mm	1.8mm		50 × 200mm		
1.2m	1.5m	40 × 40mm	1.5mm	80 × 80mm	2.0mm	5mm	75 × 150mm	20 × 30mm	120mm
1.2m	1.8m	40 × 60mm	1.5mm	100 × 100mm	2.5mm	6mm	75 × 200mm		140mm
1.5m	2.0m	50 × 50mm	2.0mm		3.0mm		100 × 200mm		
1.8m	2.2m	60 × 80mm							
	2.4m								
Surface Treatment		1. Hot-dipped galvanized after black wire and tube welded 2. Powder coated after galvanized wire and tube welded							



TL-031



TL-032



TL-033



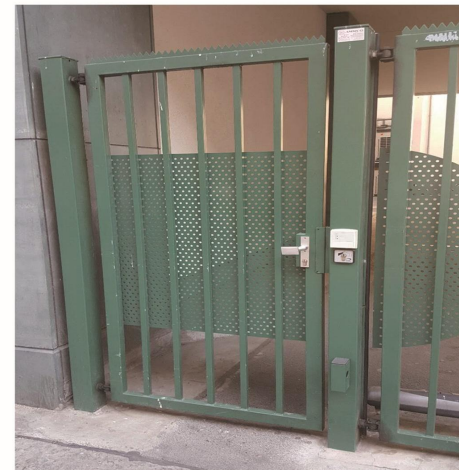
TL-027



TL-028



TL-029



TL-034



TL-035



TL-030



TL-036



TL-037

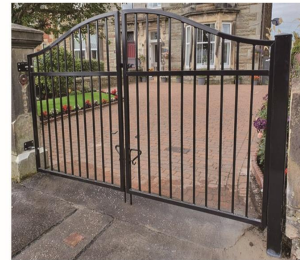
Specifications									
Width	Height	Frame Pipe		Post Size		Mesh Inside		Tube Inside	
		Size	Thickness	Size	Thickness	Wire Dia.	Hole Size	Pipe Size	Distance
2.0m	1.0m	40 × 60mm 50 × 50mm 60 × 60mm 60 × 80mm	1.5mm 2.0mm 2.5mm	60 × 60mm 80 × 80mm 100 × 100mm	1.8mm 2.0mm 2.5mm 3.0mm	4mm 5mm 6mm	50 × 100mm 50 × 200mm 75 × 150mm 75 × 200mm 100 × 200mm	20 × 20mm 20 × 30mm	100mm 120mm 140mm
3.0m	1.2m								
4.0m	1.5m								
6.0m	1.8m								
8.0m	2.0m								
	2.2m								
	2.4m								
Surface Treatment		1. Hot-dipped galvanized after black wire and tube welded 2. Powder coated after galvanized wire and tube welded							



TL-038



TL-039



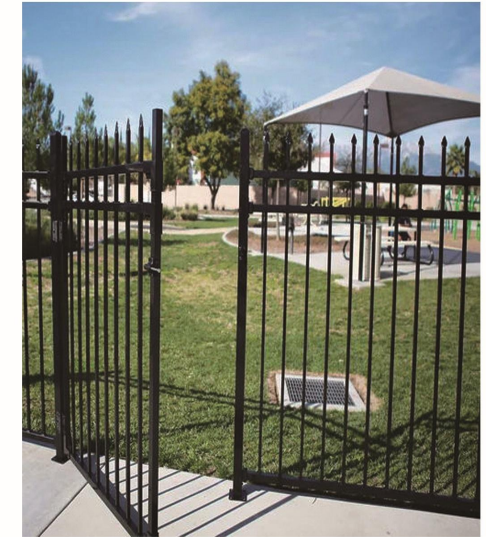
TL-040



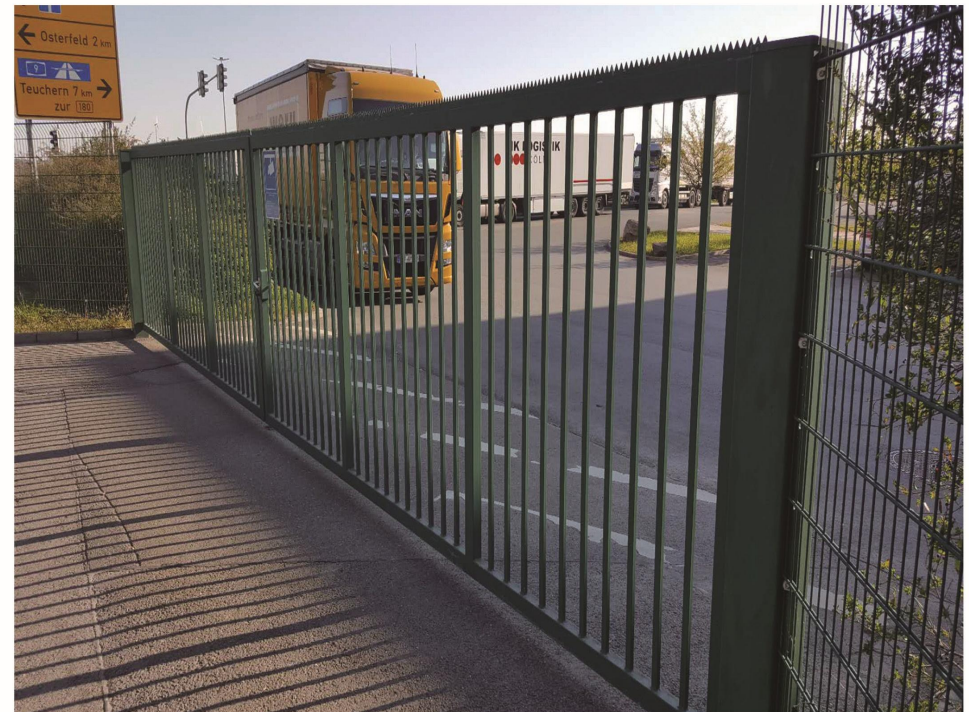
TL-041



TL-042



TL-043



TL-044

Specifications									
Width	Height	Frame Pipe		Post Size		Mesh Inside		Tube Inside	
		Size	Thickness	Size	Thickness	Wire Dia.	Hole Size	Pipe Size	Distance
4.0m	1.8m	40 × 60mm	1.5mm	60 × 60mm	1.8mm	4mm	50 × 100mm	20 × 20mm	100mm
4.5m	2.0m	50 × 50mm	2.0mm	80 × 80mm	2.0mm	5mm	50 × 200mm		120mm
5.0m	2.2m	60 × 60mm	2.5mm		2.5mm	6mm	75 × 150mm	20 × 30mm	140mm
6.0m	2.4m	60 × 80mm			3.0mm		75 × 200mm		
							100 × 200mm		

Sliding driveway gate products offer an efficient entry to your residential or light commercial property. Our sliding gate is a whole system design with gate panel, guide post, bottom wheel, support wheel, pathway. If requires for a electrically operated gate, motor, rack, control box and other all necessary accessories also available. It's flowing lines, simple and beautiful and full of rich modern residential sensual, garden Light, villas era of high-grade. Simple installation, easy maintenance, easy to clean, affordable, eliminating maintenance.

Sliding gates are great for applications with space restrictions. Swing gates require 12" to 14" of room for a gate to swing into your property. Sliding gates run on the back side of a fence line which great for properties that have width but not depth. It can be used to Country house, Park, Farm, Villadom, Industry entrance and so on.



TL-045



TL-046



TL-048



TL-049



TL-047



TL-050

Security Fence



'358' comes from its measurements 3" x 0.5" x 8 gauges which equates to approx. 76.2mm x 12.7mm x 4mm (Length x height x Diameter) in metric. 358 security fences are extremely difficult to penetrate, with the small mesh aperture being effectively finger proof, and extremely difficult to attack using conventional hand tools.

358 Fence With Buckle Plate

358 Fence With Flat Bar

Specifications						
Post Size	Thickness	Panel Height	Post Length	Flat Bar Thickness	Spike	Surface Treatment
50 × 50mm 60 × 60mm 80 × 80mm 100 × 100mm	1.8mm 2.0mm 2.5mm 3.0mm	1830mm	2400mm	4.0mm	Big type Middle type Small type	1. Black tube Hot-dipped galvanized 2. Galvanized tube PVC coated
		2030mm	2500mm	4.5mm		
		2230mm	2800mm	5.0mm		
		2430mm	3000mm	6.0mm		
		2800mm	3500mm	7.0mm		
3000mm	3700mm					

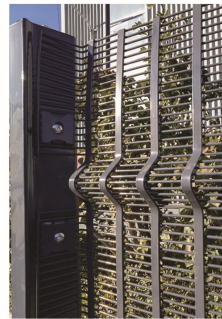
Specifications						
Line Wire × Cross Wire	Hole Size	Panel Length	Panel Height	Bending No.	Common Color	Surface Treatment
4.0 × 3.0mm 4.0 × 4.0mm 4.5 × 3.0mm 4.5 × 4.5mm	76.2 × 12.7mm 75 × 12mm	2.0m 2.2m 2.4m 3.0m	1800mm	4	Green RAL6005 Grey RAL7016 Black RAL9005	1. Hot-dipped galvanized after black wire welded 2. PVC coated after galvanized wire welded 3. PE coated after galvanized wire welded
			2000mm	4		
			2200mm	4		
			2400mm	4		
			2800mm	5		
3000mm	5					



TL-051



TL-052



TL-053



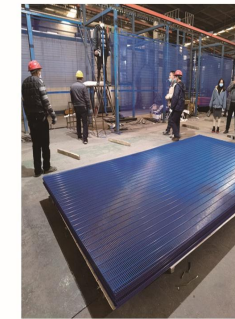
TL-054



TL-056



TL-057



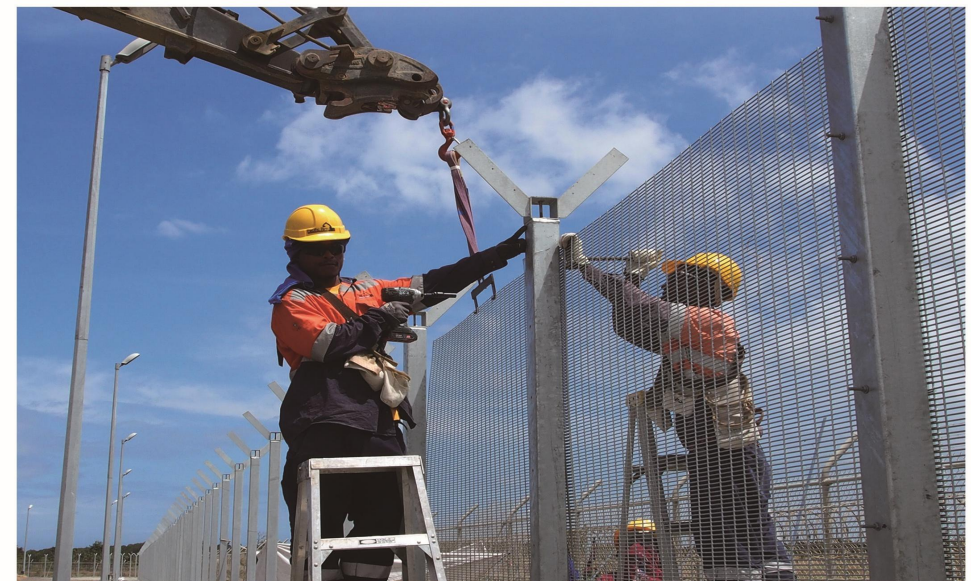
TL-058



TL-059




TL-055



TL-060

Specifications						
Line Wire x Cross Wire	Hole Size	Panel Length	Panel Height	Bending No.	Common Color	Surface Treatment
4.0 x 3.0mm 4.0 x 4.0mm 4.5 x 3.0mm 4.5 x 4.5mm	76.2 x 12.7mm 75 x 12mm	2.0m 2.2m 2.4m 3.0m	1800mm	4	Green RAL6005 Grey RAL7016 Black RAL9005	1. Hot-dipped galvanized after black wire welded 2. PVC coated after galvanized wire welded 3. PE coated after galvanized wire welded
			2000mm	4		
			2200mm	4		
			2400mm	4		
			2800mm	5		
3000mm	5					

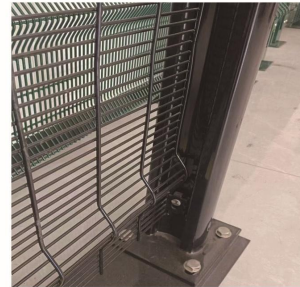
Specifications					
Post View	Hole Size	Panel Length	Panel Height	Post Length	Surface Treatment
I Type Post 	44 x 70mm 55 x 100mm	1.8mm 2.0mm 2.5mm 3.0mm	1830mm	2400mm	1. Black tube Hot-dipped galvanized 2. Galvanized tube PVC coated
			2030mm	2500mm	
Square Post Trapezium Post  	50 x 50mm 60 x 60mm 80 x 80mm 100 x 100mm		2230mm	2800mm	
			2430mm	3000mm	
			2800mm	3500mm	
			3000mm	3700mm	



TL-061



TL-062



TL-063



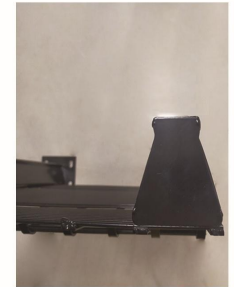
TL-065



TL-066



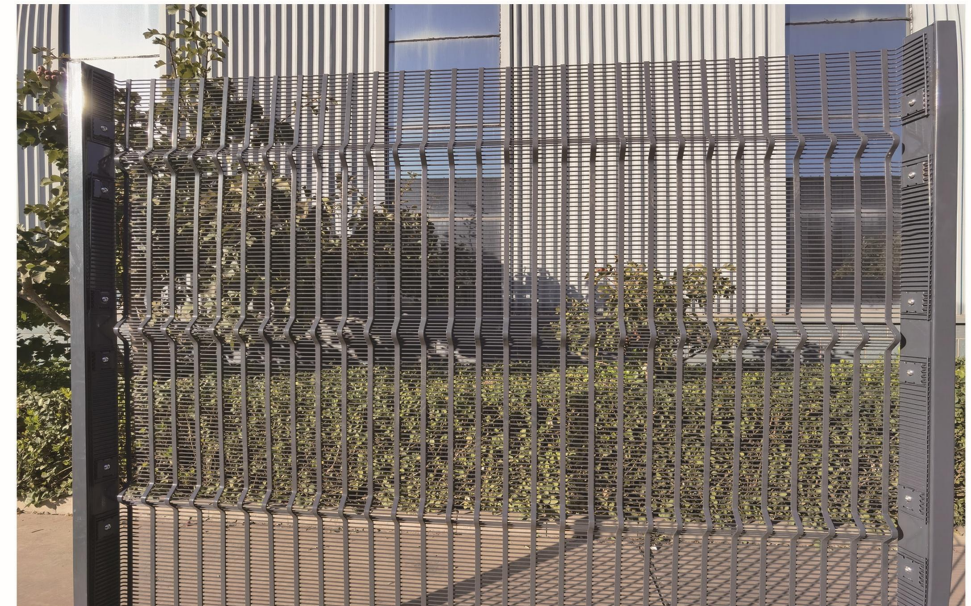
TL-067



TL-068



TL-064



TL-069

358 Fence With H Type Post

358 Fence With H Type Post

Specifications					
Horizontal Wire Dia.	Hole Size	Panel Length	Panel Height	Common Color	Surface Treatment
4mm × 3mm 4mm × 4mm 4.5mm × 4mm 4.5mm × 4.5mm	76.2 × 12.7mm 75 × 12mm	2.0m 2.2m 2.4m	1800mm	Green RAL6005 Grey RAL7016 Black RAL9005	1. Hot-dipped galvanized after black wire welded 2. PVC coated after galvanized wire welded 3. PE coated after galvanized wire welded
			2000mm		
			2200mm		
			2400mm		
			2800mm		
3000mm					

Specifications				
Panel Height	Post Length	Post Size	Common Color	Surface Treatment
1800mm	2400mm	100 × 55 × 5mm 150 × 150 × 5mm	Green RAL6005 Grey RAL7016 Black RAL9005	1. Black tube Hot-dipped galvanized 2. Galvanized tube PVC coated
2000mm	2600mm			
2200mm	2800mm			
2400mm	3000mm			
2800mm	3500mm			
3000mm	3700mm			



TL-070



TL-071



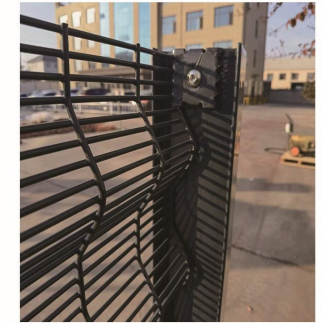
TL-072



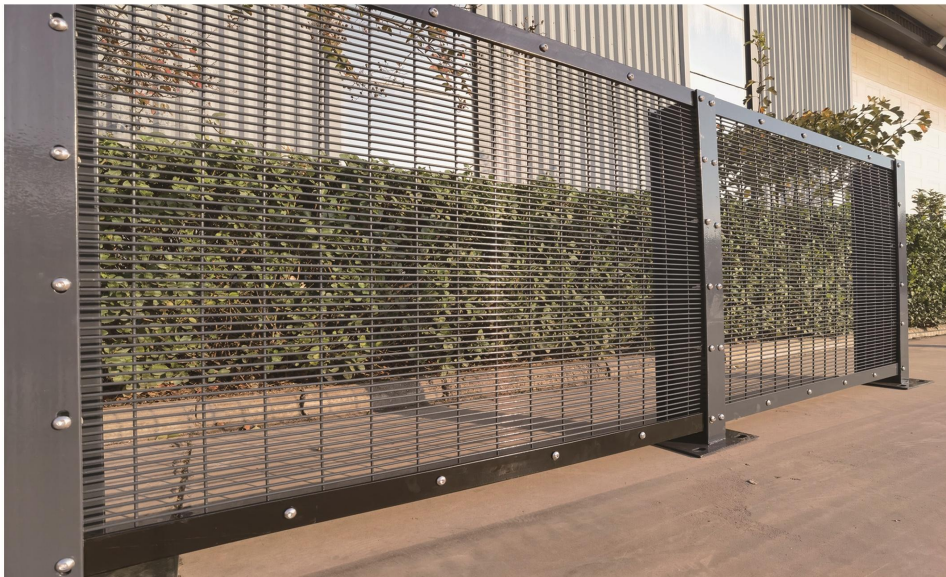
TL-074



TL-075



TL-076



TL-073



TL-077

Temporary Fence



Temporary fencing is mainly made with removable accessories which make fence panels tied with fence feet or fence post. They are removable which makes transportation and storage much easier and more efficient. And they can be used for many times to meet the feature of low cost, which is popular with customers home and abroad.

Specifications						
Horizontal Wire Dia.	Vertical Wire Dia.	Welded Mesh Hole Size	Chain Link Mesh Hole Size	Panel Length	Panel Height	Frame Tube
3mm	3mm	60 × 60mm	50 × 50mm	2.2m	1.8m	Φ32 × 1.4mm
4mm	3mm	50 × 100mm	60 × 60mm			Φ32 × 1.8mm
		65 × 150mm	75 × 75mm	2.3m	2.1m	Φ32 × 2.0mm
4mm	4mm	75 × 150mm	100 × 100mm	2.4m		Φ48 × 1.8mm
		100 × 200mm				Φ48 × 2.0mm

Surface Treatment: 1. Hot-dipped galvanized wire and tube welded 2. PVC coated after galvanized wire and tube welded



TL-078



TL-079



TL-080



TL-082



TL-081



TL-082



TL-084



TL-087



TL-088



TL-089



TL-090



TL-091



TL-092



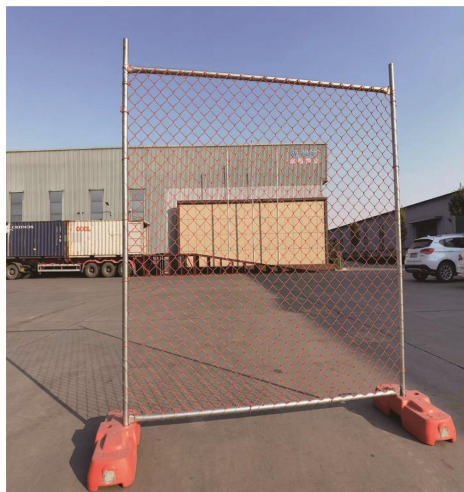
TL-093



TL-094



TL-095



TL-085



TL-086



TL-096



TL-097

Canada Temporary Fence

Specifications					
Wire Dia.	Welded Mesh Hole Size	Panel Length	Panel Height	Frame Tube	Inner Tube
3.0mm x 3.0mm	60 x 60mm	2.4m	1.8m	25 x 25 x 1.0mm	20 x 20 x 1.0mm
3.5mm x 3.5mm	50 x 100mm			25 x 25 x 1.2mm	
4.0mm x 3.0mm	50 x 150mm			25 x 25 x 1.5mm	
4.0mm x 4.0mm	75 x 150mm			25 x 25 x 1.8mm	
	100 x 200mm	3.6m	2.1m	25 x 25 x 2.0mm	20 x 20 x 1.5mm

Surface Treatment: 1.Hot-dipped galvanized wire and tube welded 2.PVC coated after galvanized wire and tube welded 3.Hot-dipped galvanized after black wire and tube welded



TL-098



TL-099



TL-100



TL-101

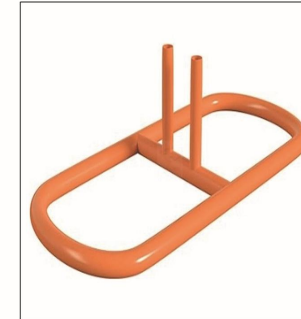
American Temporary Fence

Specifications					
Wire Dia.	Chain Link Mesh Hole Size	Panel Length	Panel Height	Frame Tube	
3.0mm	50 x 50mm	2.4m	1.8m	Φ32 x 2.0mm	
3.5mm				60 x 60mm	Φ48 x 1.5mm
4.0mm				65 x 65mm	Φ48 x 1.8mm
	75 x 75mm	3.6m	2.0m	Φ48 x 2.0mm	

Surface Treatment: Hot-dipped galvanized wire and tube welded



TL-102



TL-103

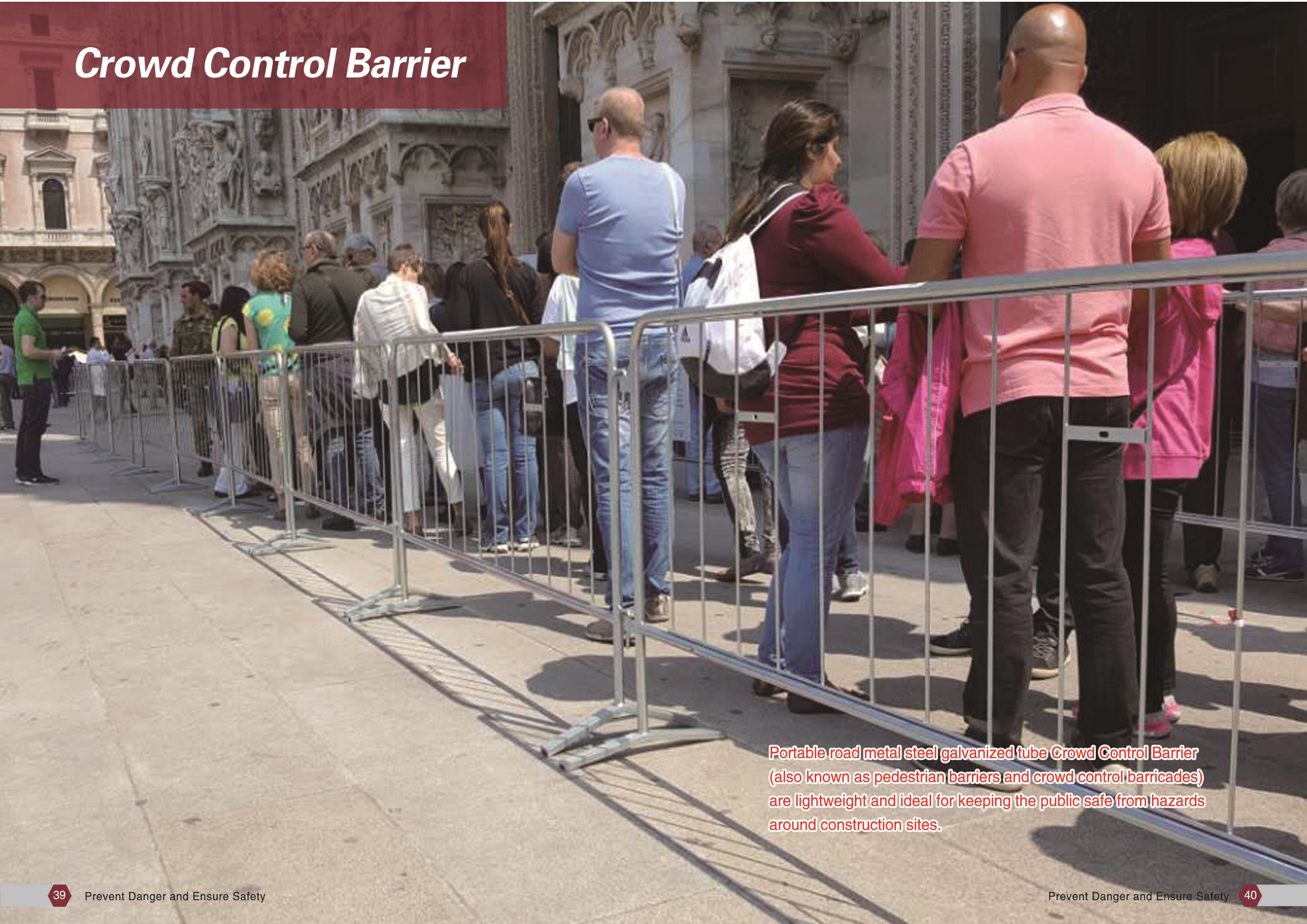


TL-104



TL-105

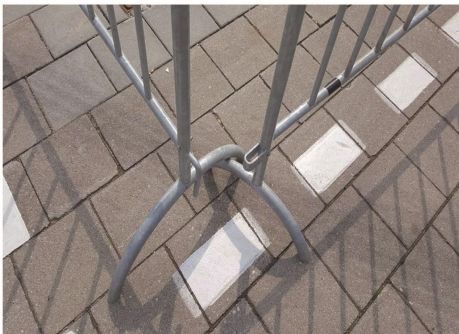
Crowd Control Barrier



Portable road metal steel galvanized tube Crowd Control Barrier (also known as pedestrian barriers and crowd control barricades) are lightweight and ideal for keeping the public safe from hazards around construction sites.

Specifications					
Panel Length	Panel Height	Frame Tube	Inner Tube	Inner Tube Distance	Feet
6.5'	36" 40" 47" 60"	Φ38 × 1.5mm Φ38 × 1.8mm Φ38 × 2.0mm	Φ12 × 1.2mm Φ12 × 1.5mm Φ16 × 1.5mm	110mm 120mm 150mm	Flat feet: 50 × 580 × 6mm
7.0'					Bridge feet: 67.5 × 50cm
7.5'					Length × Width: 67.5 × 50cm
8.0'					V shape feet height: 270mm
8.5'					

Surface Treatment: 1. Hot-dipped galvanized wire and tube welded 2. PVC coated after galvanized wire and tube welded 3. Hot-dipped galvanized after black wire and tube welded



TL-110



TL-111



TL-106



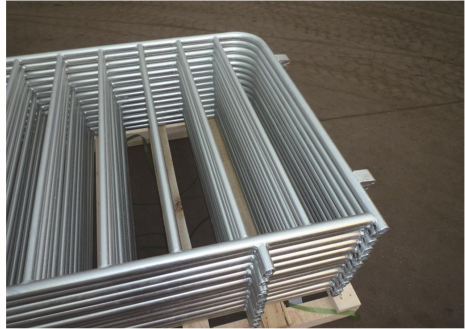
TL-107



TL-108



TL-112



TL-113



TL-109



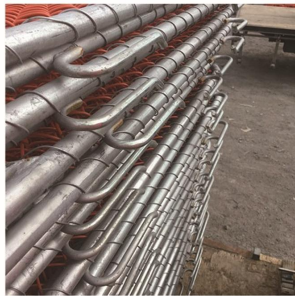
TL-114

Specifications					
Panel Length	Panel Height	Frame Tube	Inner Tube	Inner Tube Distance	Feet
1050mm	900mm	Φ25 × 1.0mm	Φ20 × 1.0mm	110mm	Flat feet: 50 × 580 × 6 mm
2000mm	1000mm	Φ25 × 1.2mm	Φ20 × 1.2mm	120mm	Bridge feet: 67.5 × 50cm
2100mm	1100mm	Φ25 × 1.6mm	Φ20 × 1.2mm	150mm	Length × Width: 67.5 × 50cm
2300mm	1500mm	Φ25 × 2.0mm	Φ20 × 1.5mm	196mm	
2500mm					

Surface Treatment: 1. Hot-dipped galvanized wire and tube welded 2. PVC coated after galvanized wire and tube welded 3. Hot-dipped galvanized after black wire and tube welded



TL-115



TL-116



TL-117



TL-119



TL-118



TL-120

Specifications					
Panel Length	Panel Height	Frame Tube	Inner Tube	Inner Tube Distance	Feet
2.0m	900mm	Φ38 × 1.5mm	Φ16 × 1.2mm	110mm	Flat feet: 50 × 580 × 6mm
2.2m	1000mm	Φ38 × 1.8mm	Φ16 × 1.5mm	120mm	Bridge feet: 67.5 × 50cm
2.5m	1100mm	Φ38 × 2.0mm	Steel rod:	150mm	V shape feet height: 270mm
	1200mm	Φ48 × 1.5mm	Φ12mm		
		Φ48 × 2.0mm			

Surface Treatment: 1. Hot-dipped galvanized wire and tube welded
2. Hot-dipped galvanized after black wire and tube welded



TL-121



TL-122



TL-123



TL-124

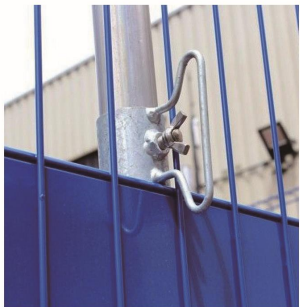


TL-125

Edge Protection Fence

Edge Protection Fence

Specifications					
Wire Diameter	Mesh Size	Length	Height	Round Post	Square Post
5mm × 4mm	75 × 75mm	1.5m	1.3m		
6mm × 5mm	50 × 100mm	2.0m	1.4m	48 × 2mm	50 × 50 × 2mm
8mm × 6mm	50 × 200mm	2.5m	1.5m	60 × 2mm	60 × 60 × 2mm
		3.0m	1.6m		



TL-126



TL-127



TL-128



TL-129

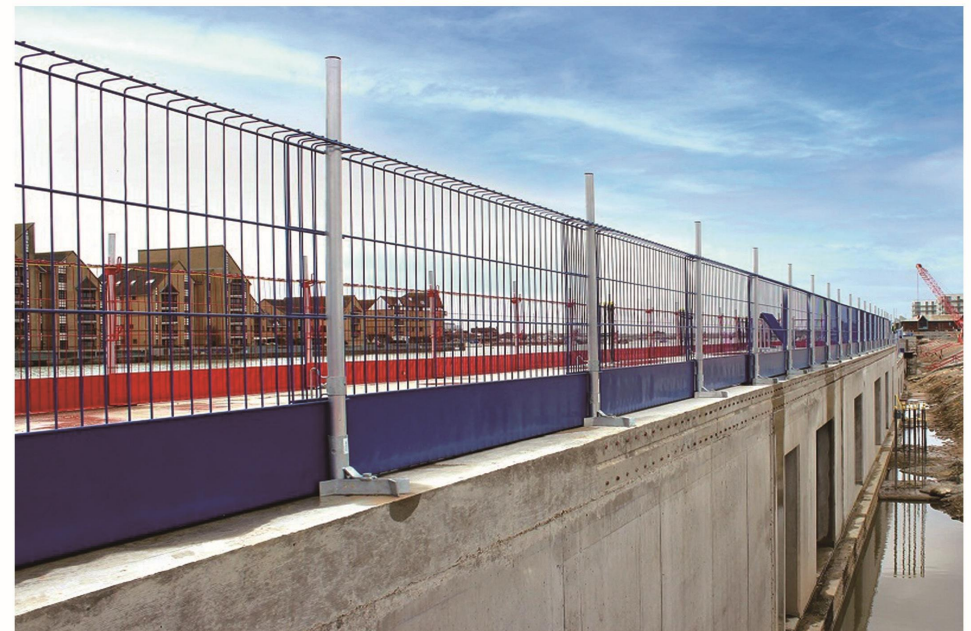
Specifications					
Wire Diameter	Mesh Size	Length	Height	Bending Degree	Round Post
5mm × 4mm	75 × 75mm	1.5m	1.2m	60°	
6mm × 5mm	50 × 100mm	2.0m	1.3m	90°	48 × 2mm
8mm × 6mm	50 × 200mm	2.5m	1.4m	12°	60 × 2mm
	75 × 150mm	3.0m	1.5m		



TL-130



TL-131



TL-132

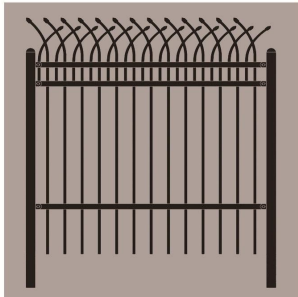
Tubular Fence



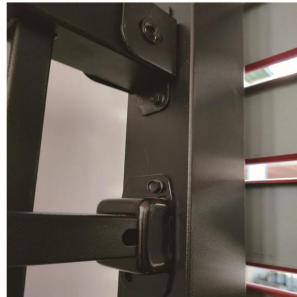
A picket fence formed of relatively thin-walled rectangular cross-section tubular-steel posts, rails and pickets, with holes in the posts receiving the ends of the rails and with holes in the rails receiving the ends of the pickets.

Specifications							
Panel Length	Panel Height	Rails	Rails Thickness	Rails No.	Picket	Picket Distance	Post Size
1.5m	1200mm	25 × 25mm 40 × 40mm 45 × 45mm	1.0mm	2pcs 3pcs 4pcs	16 × 16 × 1mm/1.2mm 19 × 19 × 1.2mm/1.5mm Φ 16 × 1.2/1.5mm Φ 19 × 1.2/1.5mm	100mm 125mm 140mm	50 × 50 × 1.5mm/1.8mm/2mm 60 × 60 × 1.5mm/1.8mm/2mm 75 × 75 × 1.5mm/1.8mm/2mm
1.8m	1500mm		1.2mm				
2.0m	1800mm		1.5mm				
2.4m	2000mm		1.8mm				
2.5m	2100mm		2.0mm				
3.0m	2400mm	2.5mm					

Surface Treatment: Powder coated after Hot-dipped galvanized tube welded



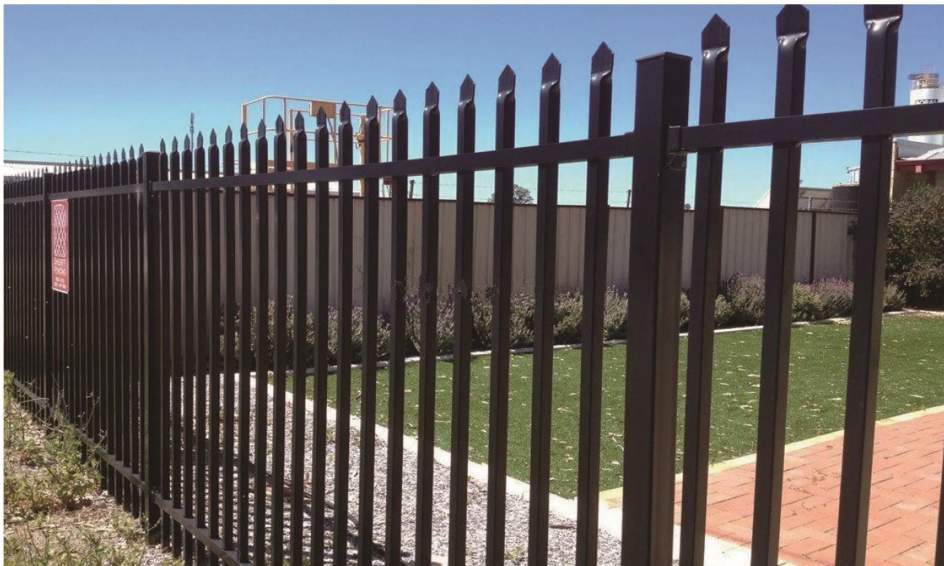
TL-133



TL-134



TL-135



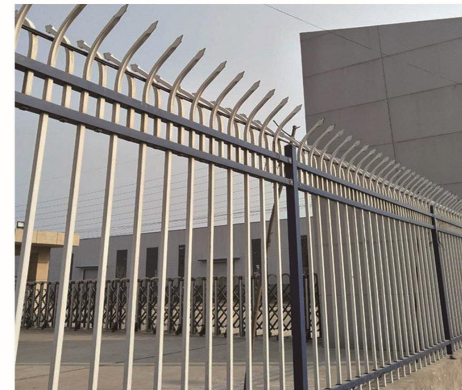
TL-136



TL-137



TL-138



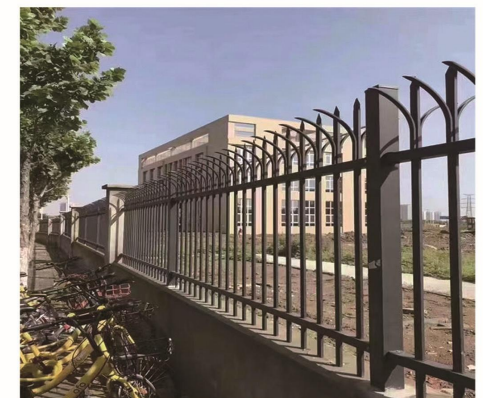
TL-139



TL-140



TL-141



TL-142

Specifications							
Panel Length	Panel Height	Rails	Rails Thickness	Rails No.	Picket	Picket Distance	Post Size
1.5m	1200mm	25 × 25mm	1.0mm	2pcs	16 × 16 × 1mm/1.2mm	100mm	50 × 50 × 1.5mm/1.8mm/2mm
1.8m	1500mm	25 × 38mm	1.2mm		19 × 19 × 1.2mm/1.5mm	110mm	
2.0m	1800mm	38 × 38mm	1.5mm	3pcs	Φ 16 × 1.2/1.5mm	125mm	75 × 75 × 1.5mm/1.8mm/2mm
2.4m	2000mm	40 × 40mm	1.8mm	4pcs			
2.5m	2100mm	45 × 45mm	2.0mm				
3.0m	2400mm		2.5mm				

Surface Treatment: Powder coated after Hot-dipped galvanized tube welded



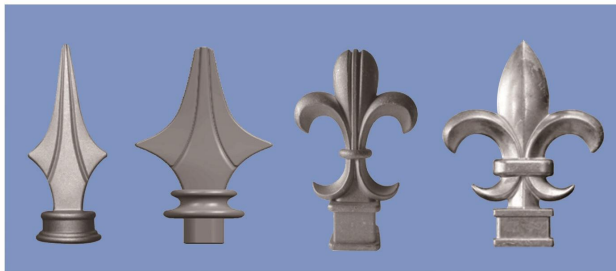
TL-149



TL-150



TL-143

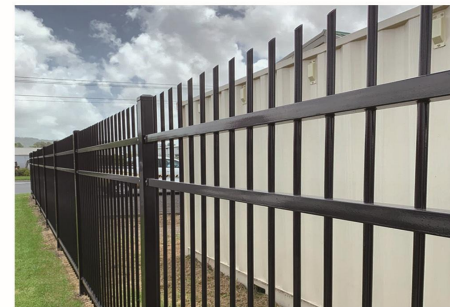


TL-144

TL-145

TL-146

TL-147



TL-151



TL-152

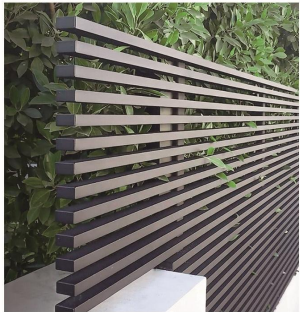


TL-148



TL-153

Specifications	
Product	Aluminium privacy Fence
Brand Name	Orient Aluminium
Material	Alloy 6063/6061/6005/6060, T5/T6
Finish	Anodizing, powder coating, wooden color
Size	24m*16m, 30m*18m, 28m*20m, 26m*18m, 22m*18m, 20m*16m, 18m*16m, 17m* 15m and Customized
Characteristics	Strong, stylish, durable, corrosion-resistant
Usage	Garden , Pool , Balcony ,deck



TL-154



TL-155



TL-156



TL-157



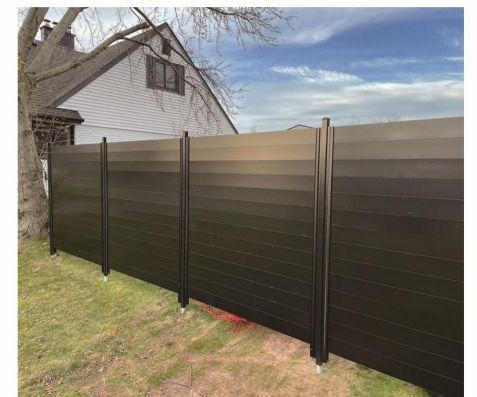
TL-158



TL-159



TL-160



TL-161



TL-162

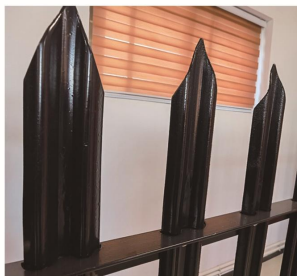


TL-163

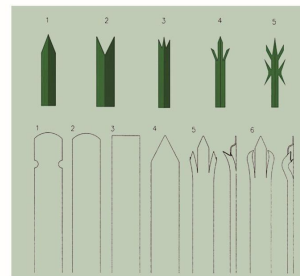
Specifications						
Pale Section	Thickness of Pale	Standard Pale Pcs	Standard Fence Width	Height	Angle Rail	Surface Treatment
"D" Section	2.0mm	17 Pales	2.75m	1800mm	40 × 40 × 4mm	1. Hot-dipped galvanized 2. Powder coated
	2.5mm			2000mm		
	3.0mm			2100mm		
"W" Section	2.5mm			2400mm	50 × 50 × 5mm	
	3.0mm			2400mm		
	3.5mm			3000mm		



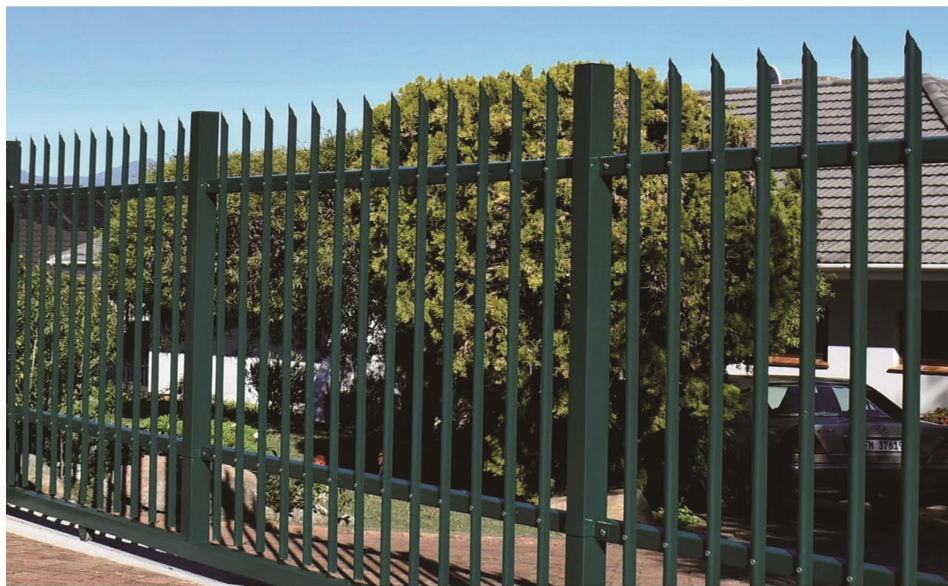
TL-164



TL-165



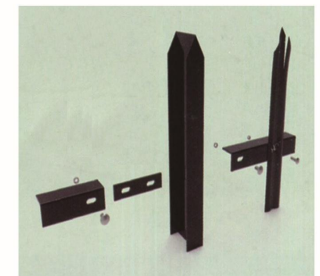
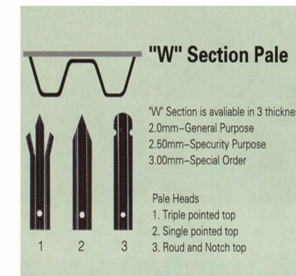
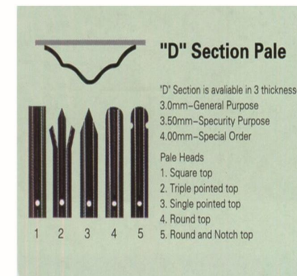
TL-166



TL-167

Specifications						
Post View	Post Size	Thickness	Panel Height	Post Height	Link Mode	
H Post 	55 × 100mm 74 × 120mm	5.0mm	1800mm	2400mm		
		6.0mm	2000mm	2600mm		
		8.0mm	2100mm	2700mm		
Square Post 	60 × 60mm 80 × 80mm 100 × 100mm	2.0mm	2400mm	3000mm		
		2.5mm	2400mm	3000mm		
		3.0mm	3000mm	4000mm		
		3.5mm	3000mm	4000mm		

Surface Treatment: 1.Hot-dipped galvanized 2.Powder coated



TL-168

Specifications						
Line Wire x Cross Wire	Hole Size	Panel Length	Panel Height	Bending No.	Common Color	Surface Treatment
4.5 x 4.5mm	50 x 100mm	2.0m	1830mm	4	Green RAL6005	1. Hot-dipped galvanized after black wire welded 2. PVC coated after galvanized wire welded 3. PE coated after galvanized wire welded
5.0 x 4.0mm	50 x 200mm	2.2m	2030mm	4	Grey RAL7016	
5.0 x 5.0mm	55 x 200mm	2.5m	2230mm	4	Black RAL9005	
6.0 x 5.0mm	75 x 150mm	2.8m	2430mm	4	White RAL9010	
	100 x 300mm	3.0m				



TL-169



TL-170



TL-171



TL-172

Specifications						
Post View	Size	Thickness	Panel Height	Post Length	Arm Length	Surface Treatment
	50 x 50mm	1.5mm	1830mm	2400mm	350mm	1. Black tube Hot-dipped galvanized 2. Galvanized tube PVC coated
	60 x 60mm	1.8mm	2030mm	2500mm	450mm	
	80 x 80mm	2.0mm	2230mm	2800mm	500mm	
		2.5mm	2430mm	3000mm	550mm	
		3.0mm				



TL-173



TL-174



TL-175



TL-176



TL-177



TL-178



TL-179

Decorative Fence



Decorative fencing panels system is a complete decorative fencing system (including single and double gates) developed for design-oriented and rigid fencing solutions.

Specifications				
Wire Dia.	Hole Size	Length	Height	No. of Fittings
4/6mm 5/8mm 5/4/5mm 6/5/6mm 8/6/8mm	50 × 100mm 50 × 150mm 50 × 200mm 75 × 150mm 100 × 200mm	2000mm 2200mm 2500mm 3000mm	1500mm	3
			1800mm	4
			2000mm	4
			2200mm	5
			2400mm	5
			2800mm	6
Surface Treatment		1. Hot dipped galvanized after black wire welded 2. Powder coated after galvanized wire welded 3. Powder coated after Black wire welded		

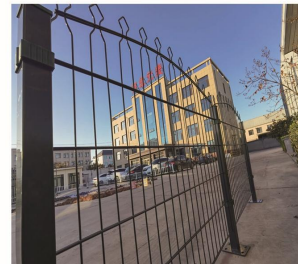
Specifications					
Post View	Size	Thickness	Panel Height	Post Length	Surface Treatment
 Square Post	40 × 40mm	1.0mm	1500mm 1800mm 2000mm 2200mm 2400mm 2800mm	2000mm 2400mm 2500mm 2800mm 3000mm 3400mm	1. Black tube Hot-dipped galvanized 2. Galvanized tube PVC coated
	50 × 50mm	1.1mm			
	60 × 60mm	1.2mm			
 Rectangle Post	30 × 50mm	1.5mm			
	40 × 60mm	1.8mm			
	60 × 80mm	2.0mm			
 Peach Post	50 × 70mm	2.5mm			
	70 × 100mm	1.0mm			
		1.1mm			
		1.2mm			



TL-180



TL-181



TL-182



TL-184



TL-185



TL-186



TL-187



TL-183



TL-188



TL-189



TL-190



TL-191



TL-196



TL-197



TL-198



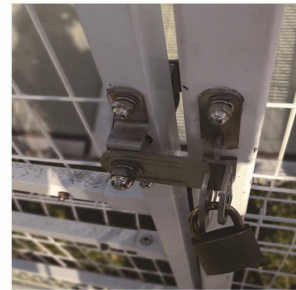
TL-192



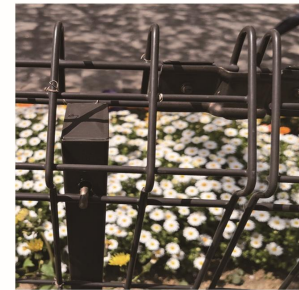
TL-193



TL-194



TL-199



TL-200



TL-201



TL-195



TL-202

Double Horizontal Wire Fence

Double Horizontal Wire Fence

Specifications					
Post View	Size	Thickness	Panel Height	Post Length	Surface Treatment
Square Post 	40 × 40mm	1.0mm	1500mm 1800mm 2000mm 2200mm 2400mm 2800mm	2000mm 2400mm 2500mm 2800mm 3000mm 3400mm	1. Black tube Hot-dipped galvanized 2. Galvanized tube PVC coated
	50 × 50mm	1.1mm			
	60 × 60mm	1.2mm			
Rectangle Post 	30 × 50mm	1.5mm			
	40 × 60mm	1.8mm			
	60 × 80mm	2.0mm 2.5mm			
Peach Post 	50 × 70mm	1.0mm			
	70 × 100mm	1.1mm			
		1.2mm			



TL-208



TL-209



TL-210



TL-211



TL-203



TL-204



TL-205



TL-206



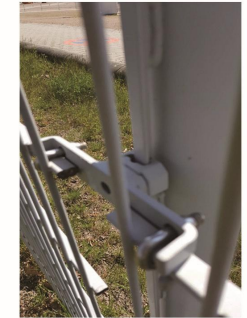
TL-212



TL-213



TL-214



TL-215




TL-207



TL-216

Specifications						
Wire Dia.	Hole Size	Panel Length	Panel Height	Bending No.	Common Color	Surface Treatment
4.0mm 4.5mm 5.0mm 6.0mm	50 × 100mm 50 × 200mm 55 × 200mm 75 × 150mm	2.0m 2.2m 2.4m 2.5m	830mm	2	Green RAL6005 Grey RAL7016 Brown RAL8019 Black RAL9005 White RAL9010	1.Hot-dipped galvanized after black wire welded 2.PVC coated after galvanized wire welded
			1030mm	2		
			1230mm	2		
			1530mm	3		
			1830mm	4		
2030mm	4					

Specifications						
Post View	Size	Thickness	Panel Height	Base Post	Normal Post	Surface Treatment
 Square Post	40 × 40mm	1.2mm 1.5mm 1.8mm 2.0mm 2.5mm	830mm	850mm	1200mm	1.Black tube Hot-dipped galvanized 2.Galvanized tube PVC coated
	50 × 50mm		1030mm	1050mm	1400mm	
	60 × 60mm		1230mm	1250mm	1600mm	
	 Round Post		Φ48mm	1530mm	1550mm	
Φ60mm		1830mm	/	2400mm		
Φ75mm		2030mm	/	2500mm		



TL-217



TL-218



TL-219



TL-220



TL-221



TL-222



TL-223



TL-224



TL-225



TL-226

Specifications					
Wire Dia.	Mesh Size	Panel Length	Panel Height	Common Color	Surface Treatment
4.0 × 4.0mm 4.5 × 4.0mm 4.5 × 4.5mm 5.0 × 4.0mm 5.0 × 5.0mm	50 × 100mm 50 × 200mm 55 × 200mm 75 × 150mm 100 × 300mm	2.0m 2.2m 2.4m 2.5m 2.8m	830mm	Green RAL6005 Grey RAL7016 Brown RAL8019 Black RAL9005 White RAL9010	1. Hot-dipped galvanized after black wire welded 2. PVC coated after galvanized wire welded 3. PE coated after galvanized wire welded
			1030mm		
			1230mm		
			1530mm		
			1830mm		
			2030mm		

Specifications						
Post View	Size	Thickness	Panel Height	Base Post	Normal Post	Surface Treatment
Square Post 	40 × 40mm 50 × 50mm 60 × 60mm	1.5mm 1.8mm 2.0mm 2.5mm	830mm	850mm	1200mm	1. Black tube Hot-dipped galvanized 2. Galvanized tube PVC coated
			1030mm	1050mm	1400mm	
			1230mm	1250mm	1600mm	
Round Post 	Φ48mm Φ60mm Φ75mm		1530mm	1550mm	2000mm	
			1830mm	/	2400mm	
			2030mm	/	2500mm	



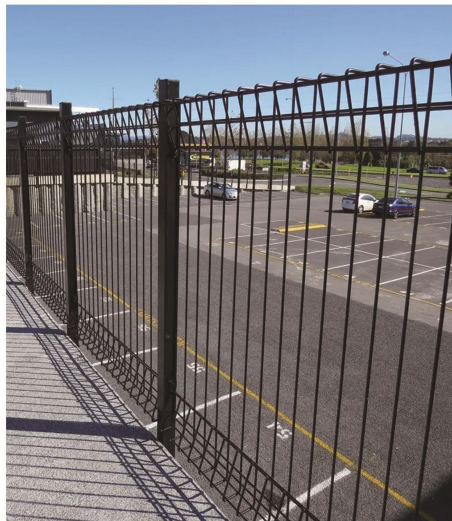
TL-227



TL-228



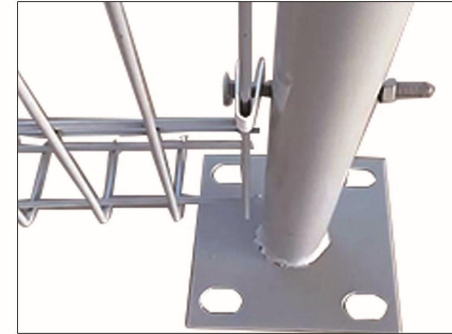
TL-229



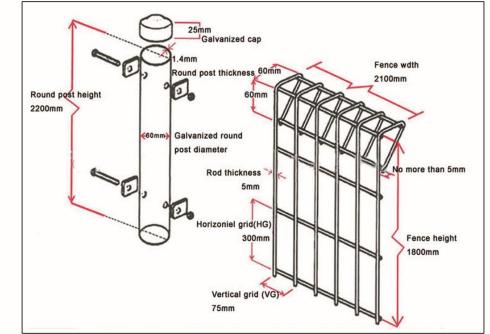
TL-230



TL-231



TL-232



TL-233



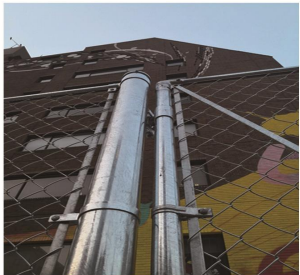
TL-234



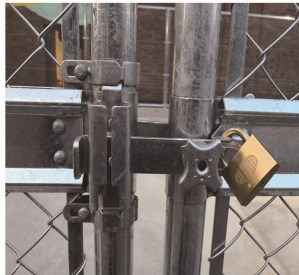
TL-235

Specifications					
Wire Dia.	Material	Hole Size	Roll Height	Roll Length	Edge Woven
2.5mm	Electric galvanized wire	40 × 40mm	1.2m	9m	Knuckled edge Twist edge
3.0mm		50 × 50mm	1.5m	10m	
3.5mm	Hot-dipped galvanized wire	60 × 60mm	1.8m	15m	
4.0mm	Galfan wire	75 × 75mm	2.0m	18m	
4.5mm	PE/PVC coated wire	100 × 100mm	2.4m	20m	
				2.8m	
			3.0m	30m	

Surface Treatment: 1. Hot-dipped galvanized wire woven 2. PE/PVC coated wire woven 3. Stainless wire woven



TL-236



TL-237



TL-238



TL-239



TL-240



TL-241



TL-242





TL-243

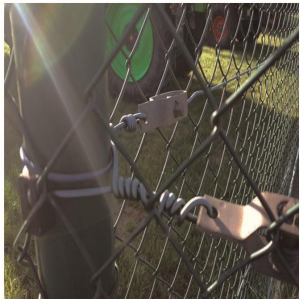


TL-244



TL-245

Specifications					
Post View	Post Size	Rails	Thickness	Mesh Height	Post Length
Round Post 	Φ 40	Φ 32 Φ 40 Φ 48	1.5mm	1.2m	1.6m
	Φ 48		1.8mm	1.5m	2.0m
	Φ 60		2.0mm	1.8m	2.3m
	Φ 75		2.5mm	2.0m	2.5m
Angle Iron 	40 × 40mm	40 × 40mm 50 × 50mm	4.0mm	2.4m	3.0m
	50 × 50mm		5.0mm	2.8m	3.5m
	60 × 60mm		6.0mm	3.0m	3.7m
	70 × 70mm				
Surface Treatment: 1. Pre-galvanized tube 2. Galvanized tube powder coated 3. Hot-dipped galvanized					



TL-246



TL-247



TL-248



TL-249



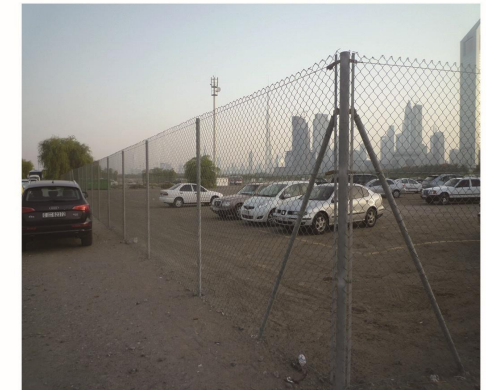
TL-250



TL-251



TL-252



TL-253



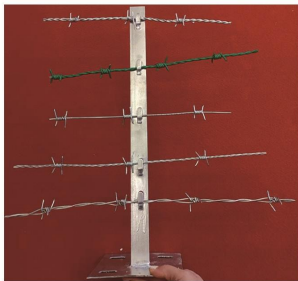
TL-254



TL-255

Specifications				
Type	Wire Gauge (SWG)		Barb Distance	Barb Length
Electric galvanized barbed wire, Hot-dip zinc plating barbed wire	10# × 12#		7.5–15cm	1.5–3cm
	12# × 12#			
	12# × 14#			
	14# × 14#			
	14# × 16#			
	16# × 16#			
PVC coated barbed wire, PE barbed wire	Before coating	After coating	7.5–15cm	1.5–3cm
	1.0mm–3.5mm	1.4mm–4.0mm		
	BWG11#–20#	BWG8#–17#		
	SWG11#–20#	SWG8#–17#		

PVC/PE Coating Thickness: 0.4mm–0.6mm; different colors or length are available at customers' request.



TL-256



TL-257



TL-258

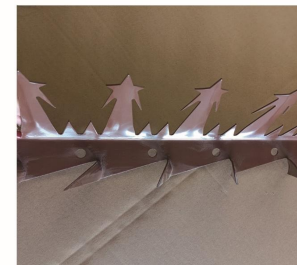


TL-259



TL-260

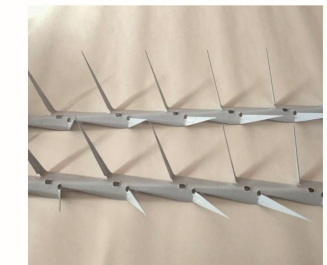
Specifications			
Model	Large	Medium	Small
Material	Q235 Plate	Q235 Plate, SS304	Q235 Plate, SS304
Length	1.25m	1.25m	1.25m
Thickness	2.0mm	2.0mm	1.0mm
Barb Length	115mm	95mm	65mm
Barb Spacing	80mm	130mm	75mm
Bottom Width	50mm	45mm	22mm
Weight	1.8kg	0.8kg	0.28kg
Surface	1. Hot dipped galvanized 2. Powder coated	1. Hot dipped galvanized 2. Powder coated	1. Hot dipped galvanized 2. Powder coated



TL-261



TL-262



TL-263

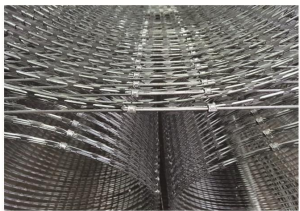


TL-264



TL-265

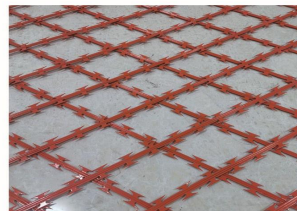
Specifications						
Reference Number	Blade Style	Thickness mm	Wire Dia. mm	Barb Length mm	Barb Width mm	Barb Spacing mm
BTO-10		0.5 ± 0.05	2.5 ± 0.1	10 ± 1	13 ± 1	26 ± 1
BTO-12		0.5 ± 0.05	2.5 ± 0.1	12 ± 1	13 ± 1	26 ± 1
BTO-18		0.5 ± 0.05	2.5 ± 0.1	18 ± 1	15 ± 1	33 ± 1
BTO-22		0.5 ± 0.05	2.5 ± 0.1	22 ± 1	15 ± 1	37 ± 1
BTO-28		0.5 ± 0.05	2.5 ± 0.1	28 ± 1	15 ± 1	45 ± 1
BTO-30		0.5 ± 0.05	2.5 ± 0.1	30 ± 1	18 ± 1	42 ± 1
CBT-60		0.5 ± 0.05	2.5 ± 0.1	60 ± 2	32 ± 1	100 ± 2
CBT-65		0.5 ± 0.05	2.5 ± 0.1	65 ± 2	21 ± 1	100 ± 2



TL-266



TL-267



TL-268



TL-269



TL-270



TL-271



TL-272



TL-273



TL-274



TL-275

Specifications	
Material	hot dipped galvanized steel, stainless steel 400 or equivalent
Length	6050 mm.
Trailer width	2160 mm.
Trailer height	2190mm
Trailer color	olive-green, orange or can be customized.
Weight of trailer without razor wire	1700 kg.
Distance to ground (minimum)	400 +/- 10 mm.
Wheel spacing	400 +/- 10 mm.



TL-280



TL-281



TL-282



TL-283



TL-276



TL-277



TL-278



TL-279



TL-284

Specifications						
Mesh Wire Dia.	Spring Wire Dia.	Hole Size	Box Length	Diaphragm	Box Width	Box Height
3.0mm		30 × 50mm	1.0m	No		
3.5mm		30 × 100mm	1.5m	No		0.3m
4.0mm	4.0mm	50 × 100mm	2.0m	1	0.5m	0.5m
4.5mm	4.5mm	75 × 75mm	3.0m	2	1.0m	1.0m
5.0mm		75 × 150mm	4.0m	3	1.5m	1.5m
6.0mm			5.0m	4		
Surface Treatment	1. PE coated after Galvanized wire welded 2. Glafan wire welded 3. Hot-dipped galvanized after black wire welded					



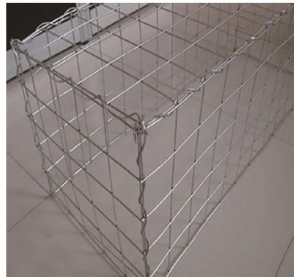
TL-289



TL-290



TL-285



TL-286



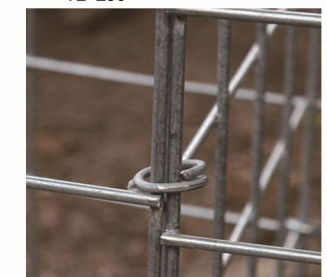
TL-287



TL-291



TL-292



TL-293



TL-288



TL-294

Specifications				
Wire Dia.	Hole Size	Length	Height	No. of Fittings
5/4/5mm 6/5/6mm 8/6/8mm	50 × 50mm 50 × 100mm 50 × 150mm 50 × 200mm	2000mm	1500mm	3
			1800mm	4
		2200mm	2000mm	4
			2200mm	5
		3000mm	2400mm	5
			2800mm	6
Surface Treatment		1. Hot dipped galvanized after black wire welded 2. Powder coated after galvanized wire welded 3. Powder coated after Black wire welded		

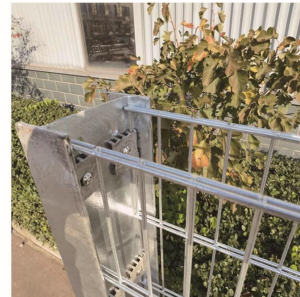
Specifications					
Post View	Size	Thickness	Panel Height	Post Length	Surface Treatment
Square Post 	40 × 120mm 60 × 140mm 80 × 160mm	1. 2mm	1500mm 1800mm 2000mm 2200mm 2400mm 2800mm	2000mm 2400mm 2500mm 2800mm 3000mm 3400mm	1. Black tube Hot-dipped galvanized 2. Galvanized tube PVC coated
		1. 5mm			
		1. 8mm			
2. 0mm					
Rectangle Post 	100 × 100mm 125 × 125mm 150 × 150mm	6. 0mm			
		7. 0mm			
		8. 0mm			
Peach Post 	40 × 80mm 60 × 120mm 80 × 160mm	1. 5mm			
		1. 8mm			
		2. 5mm			



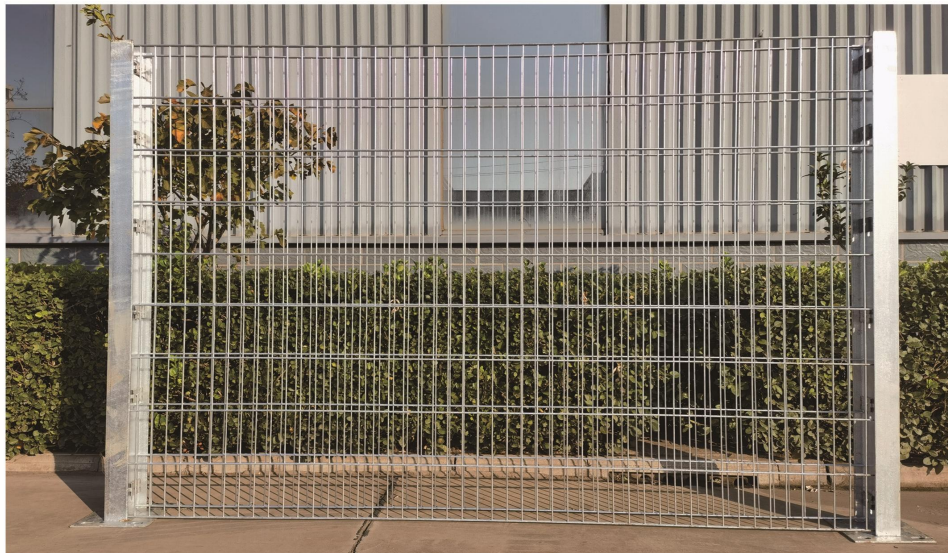
TL-295



TL-296



TL-297



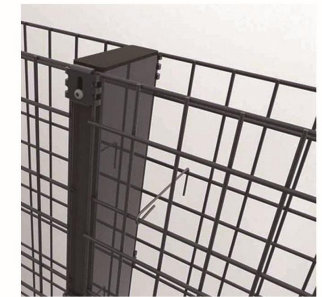
TL-298



TL-299



TL-300



TL-301



TL-302

Specifications		
Wire Diameter	Spring Wire	Mesh Size
4.0mm	4.0mm 4.5mm	76 × 76mm
4.5mm		50 × 100mm
5.0mm		100 × 100mm
Surface Treatment: 1. Galvanized wire welded 2. Galfan wire welded 3. Hot-dipped galvanized after welded		

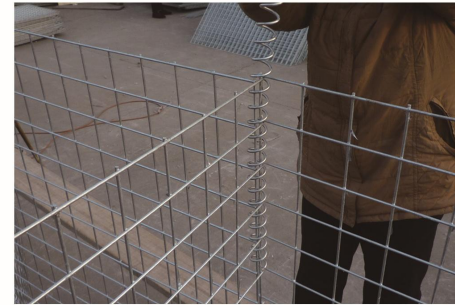


TL-303

Specifications			
Unit	Height	Width	Length
Mil 12B Mil 12G	7' (2.13m)	5' (1.52m)	95' (28.94m)
Mil 11B Mil 11G	3' 3" (1.0m)	2' 6" (0.76m)	30' (9.14m)
Mil 10B Mil 10G	4' 6" (1.37m)	2' (0.61m)	32' (10m)
Mil 9B Mil 9G	7' 3" (2.21m)	7' (2.13m)	90' (27.74m)
Mil 8B Mil 8G	5' 6" (1.68m)	2' (0.61m)	10' (3.05m)
Mil 7B Mil 7G	2' (0.61m)	2' (0.61m)	10' (3.05m)
Mil 6B Mil 6G	2' (0.61m)	5' (1.52m)	32' (10m)
Mil 5B Mil 5G	3' 3" (1.0m)	3' 3" (1.0m)	32' (10m)
Mil 4B Mil 4G	2' (0.61m)	2' (0.61m)	4' (1.21m)
Mil 3B Mil 3G	2' (0.61m)	2' (0.61m)	10' (3.05m)
Mil 2B Mil 2G	4' 6" (1.37m)	3' 6" (1.06m)	32' (10m)
Mil 1B Mil 1G	7' (2.13m)	3' 6" (1.06m)	18' (5.5m)



TL-304



TL-305



TL-306



TL-307



TL-308



TL-309

The workshop fence net is mainly used for the isolation of workshops and warehouses. It has the characteristics of beautiful and elegant appearance, strong durability, low cost, and convenient disassembly and assembly. The product structure is simple and requires less materials, resulting in low engineering cost.



TL-310



TL-312



TL-313



TL-314

Item	Description
Height	1000mm/1200mm/1800mm/2000mm
Width	200/300/500/700/800/1000/1200mm
Square tube	20*20mm
Wire diameter	3-6mm
Grid	100*20mm
Post Height	1200mm/1400mm/2000mm/2200m
Post Section	60*60mm
Size of Light curtain postSection	80*80mm*2.5mm



TL-315



TL-316



TL-317



TL-318

Item	Wire Diameter	Package	Weight
800*600pet fence	tube thickness 0.6, tube diameter15*15, wire diameter2.6 hole size 3.7*14.5	83*12.5*63	9.30
800*600pet fence	tube thickness 0.6, tube diameter15*15, wire diameter2.6 hole size 3.7*14.5	83.5*15.3*65	12.05
800*800pet fence	tube thickness 0.6, tube diameter15*15, wire diameter2.6 hole size 3.7*20	85*12*83.5	12.25
800*800pet fence	tube thickness 0.6, tube diameter15*15, wire diameter2.6 hole size 3.7*20	83.5*14*82	17.35
800*1000pet fence	tube thickness 0.6, tube diameter15*15, wire diameter3 hole size 3.7*19.5	85*12.6*105	14.05
800*1000pet fence	tube thickness 0.6, tube diameter15*15, wire diameter2.6 hole size 3.7*19.5	83*14*103	18.00
100*120pet fence	tube thickness 0.6, tube diameter15*15, wire diameter3 hole size 3.7*19.5	105*13*125	22.35
100*120pet fence	tube thickness 0.6, tube diameter15*15, wire diameter3.5 hole size 3.7*19.5	103*14*123	29.15



TL-318



TL-319



TL-320



TL-321

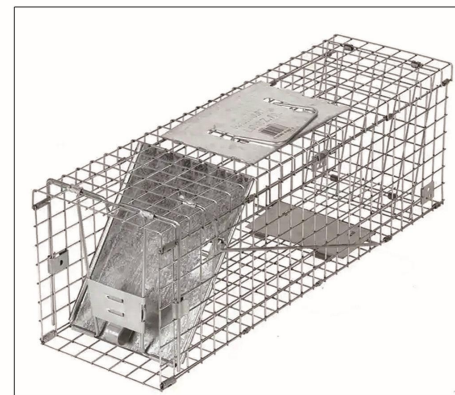
Item	Wire Diameter	Package	Weight
61cm folding cage	61x18x21cm (1.9kg net, 2.5kg)	wire diameter 2mm, hole size2.5x2.5cm carton75x23x54	10pcs/carton
Hot 66cm folding cage	66x23x26cm3kg net, 3.3kgGross weight	wire diameter 2.5mm, hole size2.5x5cm carton80x27x5.5	10pcs/carton
dipped 79cm folding cage	79x28x33cm 4kg net 4.5kgGross weight	wire diameter 2.5mm, hole size2.5x5cm carton95x32x33	5pcs/carton
galvanized 94cm foldingcag	94x34x37cm weight: 5.6kg net weight 6.1kg Gross weight	wire diameter 2.5mm, hole size2.5x5cm carton113x38x33	5pcs/carton
108cm folding cage		wire diameter 3mm, hole size5x5cm carton131x46x7	1pcs/carton



TL-322



TL-323

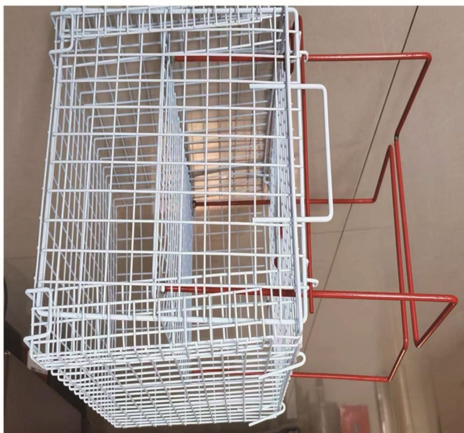


TL-324



TL-325

Specifications	
Name	Cat crush cage
Size	46cm*30cm*30cm
color	pink color Multiple choice
surface treatment	hot dipped galvanized +pvc coated
Hole size	25x50mm
inner wire diameter	2.5mm
frame size	4mm diameter
weight	4.5kg
package size	49cm*33cm*33cm



TL-326



TL-327



TL-328



TL-329

Specifications					
Type	Size	L*W*H (inch)	carton size	carton size	G.W. (KGS)
Single door wire cage	18inch	44.5*30.5*36.5	48.5*9.5*34	48.5*9.5*34	3.1kg
	22 Inch	56*33*41	58*10*35	58*10*35	3.6kg
	24 Inch	60*43*49.5	64*10*47	64*10*47	4.75kg
	30 Inch	75.5*47*54.5	78*10.5*53	78*10.5*53	6.25kg
	36 Inch	90*60*67	93*11*63.5	93*11*63.5	9.6kg
	42 Inch	107*71*77.5	110*10.5*76	110*10.5*76	12.7kg
	48 Inch	122*75.5*84	125.5*13*80	125.5*13*80	16.15kg
Double door wire cage	18inch	44.5*30.5*36.5	48.5*9.5*34	48.5*9.5*34	3.1kg
	22 Inch	56*33*41	58*10*35	58*10*35	3.6kg
	24 Inch	60*43*49.5	64*10*47	64*10*47	4.75kg
	30 Inch	75.5*47*54.5	78*10.5*53	78*10.5*53	6.25kg
	36 Inch	90*60*67	93*11*63.5	93*11*63.5	9.6kg
	42 Inch	107*71*77.5	110*10.5*76	110*10.5*76	12.7kg
	48 Inch	122*75.5*84	125.5*13*80	125.5*13*80	16.15kg



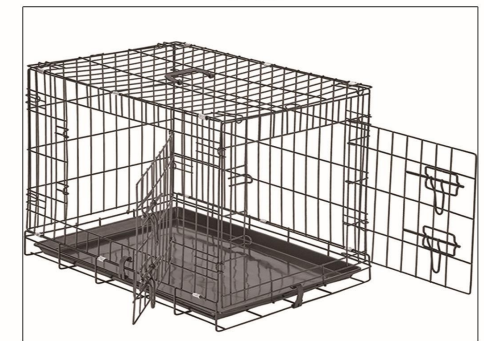
TL-330



TL-331



TL-332



TL-333

Specifications								
Materials	Mesh Wire	Servage Wire	Tie Wire	Mesh Size	Length	Diaphragm	Width	Height
Galvanized wire Galfan wire PE/PVC coated wire	1.8mm	2.4mm	2.0mm	60 × 80mm 80 × 100mm 100 × 120mm	1.0m	No	0.5m	0.3m
	2.0mm				2.0m	1		
	2.2mm	3.0m	2		1.5m	0.5m		
	2.4mm	4.0m	3		2.0m	1.0m		
	2.7mm	5.0m	4		3.0m	1.5m		
3.0mm	6.0m	5						

Extra Tie Wire: 2% Weight of gabion box



TL-334



TL-335



TL-336



TL-337



TL-338



TL-339



TL-340



TL-341



TL-342



TL-343

Farm Fence

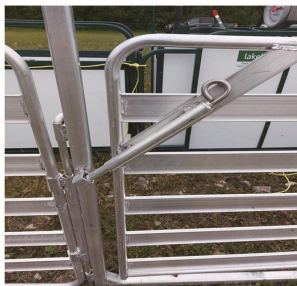


Grassland net, also known as cattle pen net, is a widely used fence in the Americas and Europe to protect ecological balance, prevent landslides, and animal husbandry.

Specifications	
Panel Length	2.1m, 2.2m, 2.5m, 2.9m, 3.0m, 3.2m, 4.0m
Panel Height	1.6m, 1.7m, 1.8m
Rails Number	4, 5, 6
Link Mode	Lugs and pin
Surface Treatment	1.Pre-galvanized tube welded 2.Hot-dipped galvanized after black tube welded



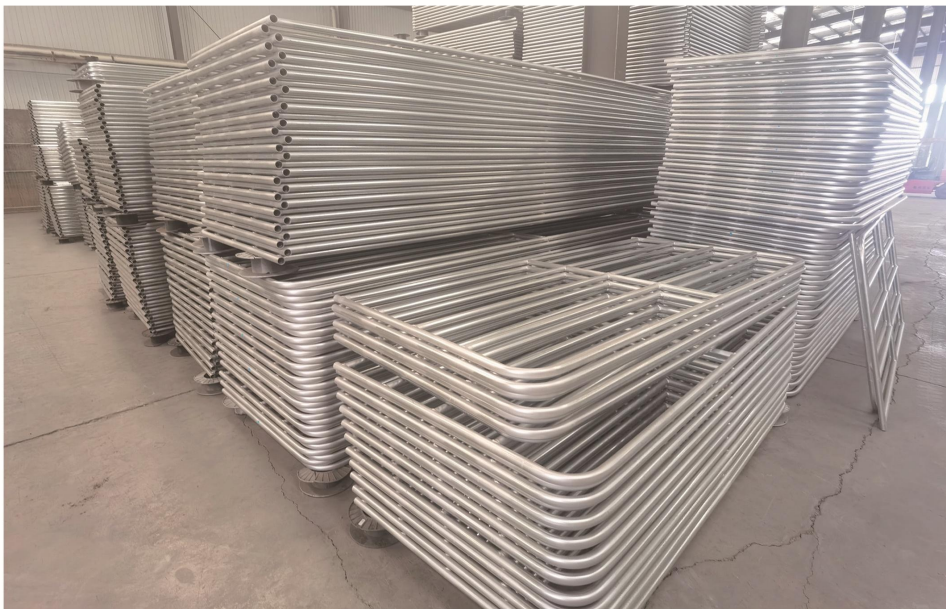
TL-344



TL-345



TL-346



TL-347

Specifications			
Vertical Tube	Thickness	Rails	Thickness
Square Pipe	40 x 40mm	Square Pipe	40 x 40mm, 50 x 50mm, 60 x 60mm
	50 x 50mm		
Round Pipe	60 x 60mm	Oval Pipe	30 x 60mm, 40 x 80mm, 42 x 115mm
	32mm		
	40mm	Round Pipe	32mm, 40mm, 48mm
	48mm		

Specifications							
Type	Surface Treatment	Hole Size mm	Wire Dia. mm	Brace	Frame Pipe mm	Height mm	Width mm
Wire Filled Farm Gate	Hot dip galvanized, paint	200 x 100	4.0	1 Brace	25 x 2.0	900-1800	1160 (4')
		200 x 110	5.0				1460 (5')
		250 x 100					1770 (6')
Pipe Filled Farm Gate	Hot dip galvanized, paint	5, 6, 7 Horizontal Pipe	32mm OD	2 Brace	32 x 1.5	900-1800	2070 (7')
			42mm OD				N Type
Chain Link Mesh Farm Gate	Hot dip galvanized, paint	50 x 50	2.0	I Type	48 x 2.0	900-1800	2980 (10')
			2.5				3580 (12')
			3.0				4180 (14')
							4780 (16')



TL-348

Hinge Joint Fence

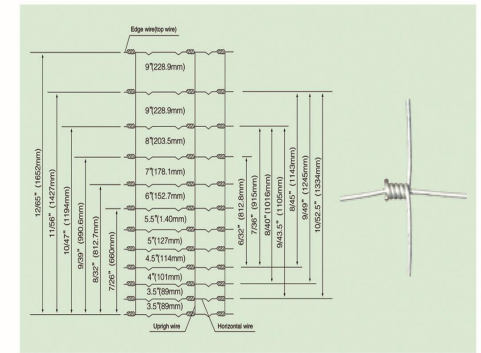
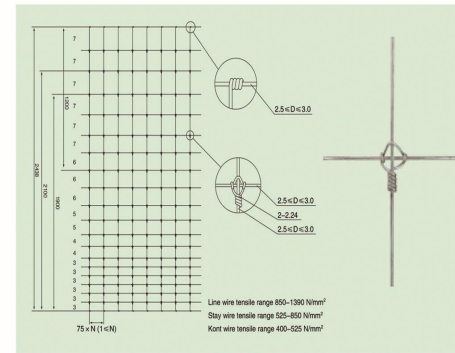
Fixed Knot Fence

Specifications						
Num	Specifications and Hole Sizes		Gross Weight kg	Top and Bottom Wire Dia. mm	Inner Wire Dia. mm	Roll Dia. mm
	Type	Specifications (The incremental vertical hole sizes)				
1	7/150/813/50	102+114+127+140+152+178	19.3	2.5	2.0	270
2	8/150/813/50	89 (75)+89+102+114+127+140+152	20.8	2.5	2.0	270
3	8/150/902/50	89+102+114+127+140+152+178	21.6	2.5	2.0	270
4	8/150/1016/50	102+114+127+140+152+178+203	22.6	2.5	2.0	270
5	8/150/1143/50	114+127+140+152+178+203+229	23.6	2.5	2.0	270
6	9/150/991/50	89 (75)+89+102+114+127+140+152+178	23.9	2.5	2.0	270
7	9/150/1245/50	102+114+127+140+152+178+203+229	26.0	2.5	2.0	270
8	10/150/1194/50	89 (75)+89+102+114+127+140+152+178+203	27.3	2.5	2.0	270
9	10/150/1334/50	89+102+114+127+140+152+178+203+229	28.4	2.5	2.0	270
10	11/150/1422/50	89 (75)+89+102+114+127+140+152+178+203+229	30.8	2.5	2.0	270

Note: The first data in type is the No. of line wire; The second data is horizontal hole size (mm);
The third data is the height of the fence (mm); The fourth data is the total length of each roll (m).



TL-349



TL-350



TL-351



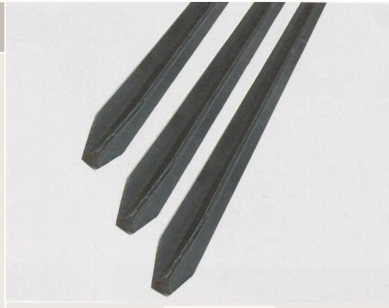
TL-352

T Shape Post

Y Shape Post

'T' Shape Post

Item	Specifications	Length
T30	30 × 30 × 3.0mm	According to customer's requirement
T35	35 × 35 × 3.5mm	
T40	40 × 40 × 4.0mm	
T50	50 × 50 × 5.0mm	
T60	60 × 60 × 6.0mm	
T65	65 × 65 × 6.5mm	
T70	70 × 70 × 7.0mm	
T80	80 × 80 × 8.0mm	

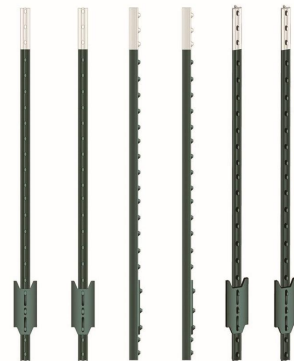


TL-353

Studded Post

Specifications	Length	Surface Treatment
0.95 lb/ft 1.25 lb/ft 1.33 lb/ft With plate	5'-8'	Hot dipped galvanized or paint green normal

This kind of special designed post can be installed with the panels without Clamps and Bolts, with easier installation and wider application.



TL-354



TL-355

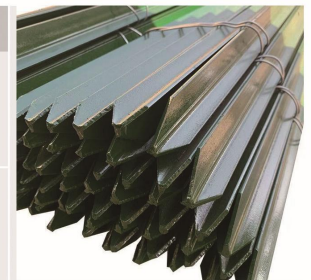


TL-356



TL-357

Items	Standard Specifications	Height	Surface Treatment
"Y" shape post	30 × 30 × 3.0mm 35 × 35 × 3.5mm	1000mm, 1200mm 1500mm, 1750mm 2000mm, 2200mm 2400mm	Galvanized and paint coated Common colors: Black
	1.32kg/m, 1.46kg/m 1.83kg/m, 1.98kg/m 2.05kg/m, 2.45kg/m	1000mm, 1200mm 1500mm, 1750mm 2000mm, 2200mm 2400mm	Galvanized and paint coated Common colors: Black

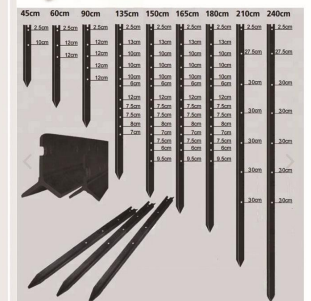


TL-358

Item#	Description	Packing	Finish-Avalible
STKR12	12" 3/4 Round Stake	Wrapped in cardboard envelop per 10 pieces then on pallets or paking according to customers" request	Painted
STKR18	18" 3/4 Round Stake		
STKR24	24" 3/4 Round Stake		
STKR30	30" 3/4 Round Stake		
STKR36	36" 3/4 Round Stake		
STKR42	42" 3/4 Round Stake		
STKR48	48" 3/4 Round Stake		
STKR7818	18" 7/8 Round Stake		
STKR7824	24" 7/8 Round Stake		
STKR7830	30" 7/8 Round Stake		
STKR7936	36" 7/8 Round Stake		
STKR7842	42" 7/8 Round Stake		
STKR7848	48" 7/8 Round Stake		
STKSQ12	12" 5/8 Square Stake		
STKSQ18	18" 5/8 Square Stake		
STKSQ24	24" 5/8 Square Stake		
STKSQ30	30" 5/8 Square Stake		
STKSQ36	36" 5/8 Square Stake		
STKSQ42	42" 5/8 Square Stake		
STKSQ48	48" 5/8 Square Stake		



TL-359



TL-360

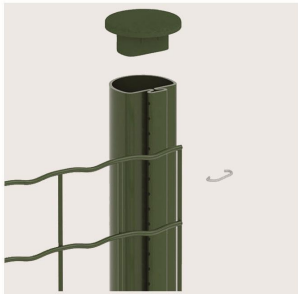


TL-361



TL-362

Specifications					
Wire Dia.	Mesh Size	Height	Length	Surface Treatment	Post Type
2.0mm	50 x 50mm 50 x 100mm	1000mm	20m	1. Electric galvanized then powder coated 2. Hot dip galvanized then powder coated	Dutch Post Round Post
2.5mm		1200mm			
3.0mm		1500mm	25m		
		1800mm	30m		
		2000mm			



TL-363



TL-364

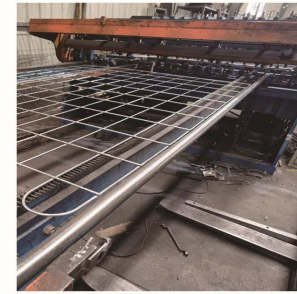


TL-365



TL-366

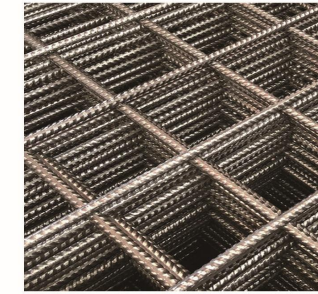
Specifications		
Wire Dia.	3mm, 4mm, 5mm, 6mm	7mm, 8mm, 9mm, 10mm, 11mm, 12mm
Hole Size	25 x 25mm, 50 x 50mm, 50 x 100mm, 75 x 75mm 75 x 150mm, 100 x 100mm, 100 x 200mm	100 x 100mm, 150 x 150mm 200 x 200mm, 100 x 300mm
Length	1.5m, 2m, 2.5m, 2.8m, 3m, 3.6m, 4m, 5m, 5.8m	
Width	1m, 1.2m, 1.5m, 1.8m, 2m, 2.2m, 2.4m	
Surface Treatment	1. Black wire welded 2. Galvanized/Galfan wire welded 3. Hot-dipped galvanized after black wire welded	



TL-367



TL-368



TL-369



TL-370

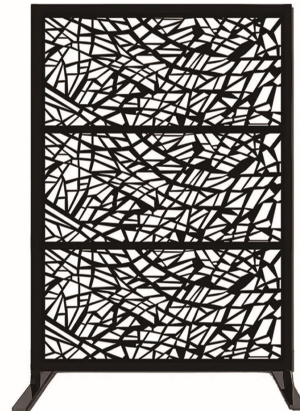
Laser cut Fence Panels can be manufactured in different size upon of your request. We can fabricate any connection you need for the installation of panels per you request. In the production of most of our railing panels we use a hydraulic press brake, a leading-edge piece of technology to form an edge in the perimeter of the panel which you can use to simply bolt the laser cut fence panel to posts.



TL-371



TL-372

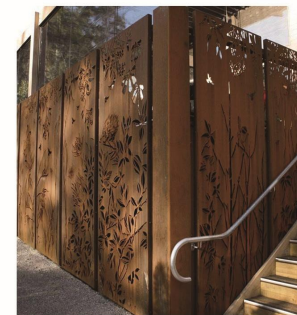


TL-373



TL-374

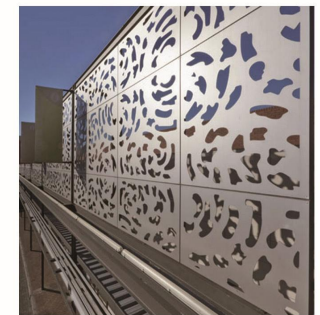
Item	Description
Material	Aluminum sheet, Stainless steel sheet, corten steel
Thickness	2mm,2.5mm,3mm,4mm,5mm,6mm,8mm,9mm,10mm,15mm
Size	customized size
Max. size	1800mm*6000mm
Surface Treatment	Powder coating, PVDF
Color	Any RAL colors for your choice
Pattern (design)	Any patterns we can customized as your needing



TL-375



TL-376



TL-377



TL-378

High quality materials: the aluminium pavilion has a uniquely-treated powder coated construction that is maintenance free and rust-free with aluminum materials, replacing simple wood structure that normally rot, crack or weather over time, entire structure is UV protected –Shade for all occasions: it offers optimal shade from harsh sun rays, ideal for the pool, hot tub, perfect for outdoor dining or entertainment, help adds elegance and ambiance to your outdoor living space



TL-379



TL-380



TL-381



TL-382



TL-383



TL-384

Item	Description
Size	Customized
Aluminum Coating	Powder Coating or PVDF
Color Options	White, Grey, Black, or Customized
Operation	Motorized/Manual
Waterproof Rating	IP67
Wind Resistant	180-220 KM/H
Snow Loading	60-80cm
Optional Items	Side Screen, Frame-less Sliding Door, Led Strip Light, Wind Sensor, Warmer.



TL-385



TL-386



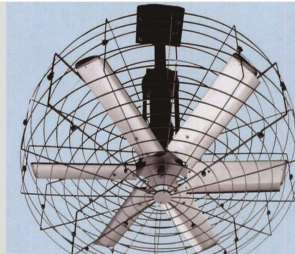
TL-387



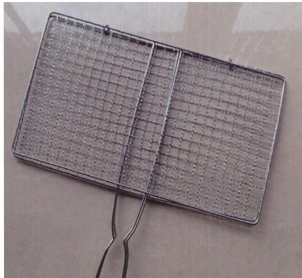
TL-388

For the protection of heat, exhaust and ventilation of air conditioners, motors, exhaust fans, radiators, fans, generators, diesel engines, etc. All guards are designed for optimal fan airflow and noise reduction and to ensure safe operation. Prevents objects such as fingers, cables or pets entering a moving fan, keeping fans and cables safe from damage.

The fan cover is completed by low-carbon steel wire, stainless steel wire 201, 304, 316, etc. by bending forming, fine welding grinding.



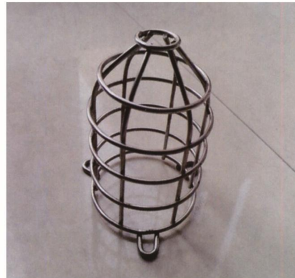
TL-389



TL-390



TL-391



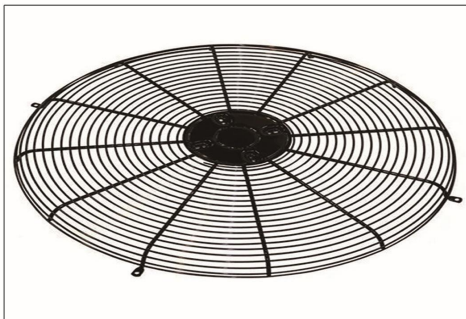
TL-392



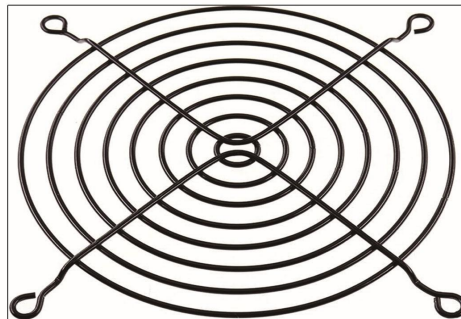
TL-393



TL-394



TL-395



TL-396

Galvanized Iron Wire

Items	Galvanized Iron Wire	Hot-Dipped Galvanized Iron Wire
Specification	0.2mm-4.0mm	0.55mm-5.0mm
Zinc Coating	7g-18g/m ²	40g-350g/m ²
Tensile Strength	30kg-70kg/mm ²	
Elongation Rate	10%-25%	
Weight / Coil	0.1kg-800kg/coil	
Packing	Plastic film inside and PVC weaving bag outside, Plastic film inside and hessian cloth outside.	



TL-397

Annealed Iron Wire

Material	Black Annealed Iron Wire, Soft Light Annealed Iron Wire
The Standard Size	BWG 5-BWG 36
T/S	30-55kg/mm ²
Packing	1-500kg/coil, PVC film inside, plastic bag or hessian cloth outside.



TL-398

PVC Coated Wire

Material	PVC Coated Wire
PVC Coating	The lowest coating 0.3mm
T/S	30-55kg/mm ²
Color	Green, blue, yellow, orange, gray, etc.
Packing	PVC film inside, plastic bag or hessian cloth outside.



TL-399

U Tie Wire

Wire Dia. mm	Length mm	Type	Shape	Packing
2.0 - 5.0	250 - 3000	Black U tie wire	Normal shape	According to customer's request
0.7 - 1.2	250 - 750	Galvanized U tie wire	Special shape	



TL-400

Straight Cut Iron Wire

Wire Dia. mm	Specifications cm
0.7-1.6	20-60
1.6-4.0	60-600



Loop Tie Wire

Wire Dia. mm	1.0-2.0
Specifications	4" - 12"
Material	Black annealed iron wire Galvanized iron wire PVC coated iron wire



TL-401



TL-402 TL-403 TL-404 TL-405 TL-406



TL-407 TL-408 TL-409 TL-410 TL-411



TL-412 TL-413 TL-414 TL-415 TL-416



TL-417 TL-418 TL-419 TL-420 TL-421



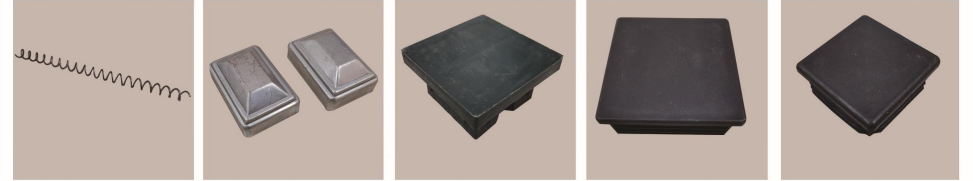
TL-422 TL-423 TL-424 TL-425 TL-426



TL-427 TL-428 TL-429 TL-430 TL-431



TL-432 TL-433 TL-434 TL-435 TL-436



TL-437 TL-438 TL-439 TL-440 TL-441



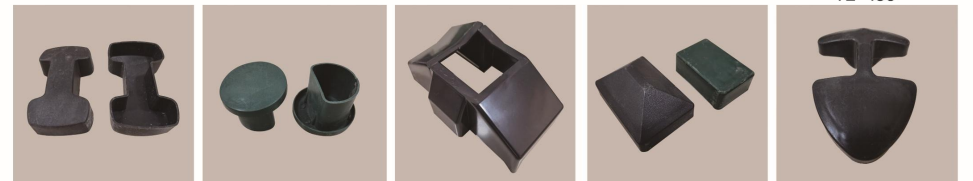
TL-442 TL-443 TL-444 TL-445 TL-446



TL-447 TL-448 TL-449 TL-450 TL-451



TL-452 TL-453 TL-454 TL-455 TL-456



TL-457 TL-458 TL-459 TL-460 TL-461

RAL Color Chart

RAL 1000 Green Beige	RAL 2008 Bright Red Orange	RAL 4007 Purple Violet
RAL 1001 Beige	RAL 2009 Traffic Orange	RAL 4008 Signal Violet
RAL 1002 Sand Yellow	RAL 2010 Signal Orange	RAL 4009 Pastel Violet
RAL 1003 Signal Yellow	RAL 2011 Deep Orange	RAL 4010 Tele Magenta
RAL 1004 Golden Yellow	RAL 2012 Salmon Orange	RAL 5000 Violet Blue
RAL 1005 Honey Yellow	RAL 3000 Flame Red	RAL 5001 Green Blue
RAL 1006 Maize Yellow	RAL 3001 Signal Red	RAL 5002 Ultramarine
RAL 1007 Daffodil Yellow	RAL 3002 Carmine Red	RAL 5003 Sapphire Blue
RAL 1011 Brown Beige	RAL 3003 Ruby Red	RAL 5004 Black Blue
RAL 1012 Lemon Yellow	RAL 3004 Purple Red	RAL 5005 Signal Blue
RAL 1013 Oyster White	RAL 3005 Wine Red	RAL 5007 Brilliant Blue
RAL 1014 Dark Ivory	RAL 3007 Black Red	RAL 5008 Grey Blue
RAL 1015 Light Ivory	RAL 3009 Oxide Red	RAL 5009 Azure Blue
RAL 1016 Sulfur Yellow	RAL 3011 Brown Red	RAL 5010 Gentian Blue
RAL 1017 Saffron Yellow	RAL 3012 Beige Red	RAL 5011 Steel Blue
RAL 1018 Zinc Yellow	RAL 3013 Tomato Red	RAL 5012 Light Blue
RAL 1019 Grey Beige	RAL 3014 Antique Pink	RAL 5013 Cobalt Blue
RAL 1020 Olive Yellow	RAL 3015 Light Pink	RAL 5014 Pigeon Blue
RAL 1021 Rape Yellow	RAL 3016 Coral Red	RAL 5015 Sky Blue
RAL 1023 Traffic Yellow	RAL 3017 Rose	RAL 5017 Traffic Blue
RAL 1024 Ochre Yellow	RAL 3018 Strawberry Red	RAL 5018 Turquoise Blue
RAL 1027 Curry	RAL 3020 Traffic Red	RAL 5019 Capri Blue
RAL 1028 Melon Yellow	RAL 3022 Salmon Pink	RAL 5020 Ocean Blue
RAL 1032 Broom Yellow	RAL 3027 Raspberry Red	RAL 5021 Water Blue
RAL 1033 Dahlia Yellow	RAL 3031 Orient Red	RAL 5022 Night Blue
RAL 1034 Pastel Yellow	RAL 4001 Red Lilac	RAL 5023 Distant Blue
RAL 2000 Yellow Orange	RAL 4002 Red Violet	RAL 5024 Pastel Blue
RAL 2001 Red Orange	RAL 4003 Heather Violet	RAL 6000 Patina Green
RAL 2002 Vermilion	RAL 4004 Red Violet	RAL 6001 Emerald Green
RAL 2003 Pastel Orange	RAL 4005 Blue Lilac	RAL 6002 Leaf Green
RAL 2004 Pure Orange	RAL 4006 Traffic Purple	RAL 6003 Olive Green

RAL Color Chart

RAL 6004 Brown Green	RAL 7002 Olive Grey	RAL 7044 Silk Grey
RAL 6005 Moss Green	RAL 7003 Moss Grey	RAL 8000 Green Brown
RAL 6006 Grey Olive	RAL 7004 Signal Grey	RAL 8001 Ochre Brown
RAL 6007 Bottle Green	RAL 7005 Mouse Grey	RAL 8002 Signal Brown
RAL 6008 Brown Green	RAL 7006 Beige Grey	RAL 8003 Clay Brown
RAL 6009 Fir Green	RAL 7008 Khaki Grey	RAL 8004 Coper Brown
RAL 6010 Grass Green	RAL 7009 Green Grey	RAL 8007 Fawn Brown
RAL 6011 Reseda Green	RAL 7010 Tarpaulin Grey	RAL 8008 Olive Brown
RAL 6012 Black Green	RAL 7011 Iron Grey	RAL 8011 Nut Brown
RAL 6013 Reed Green	RAL 7012 Basalt Grey	RAL 8012 Red Brown
RAL 6014 Yellow Olive	RAL 7013 Brown Grey	RAL 8014 Sepia Brown
RAL 6015 Black Olive	RAL 7015 Slate Grey	RAL 8015 Chestnut Brown
RAL 6016 Turquoise Green	RAL 7016 Anthracite Grey	RAL 8016 Mahogany Brown
RAL 6017 May Green	RAL 7021 Black Grey	RAL 8017 Chocolate Brown
RAL 6018 Yellow Green	RAL 7022 Umber Grey	RAL 8019 Grey Brown
RAL 6019 Pastel Green	RAL 7023 Concrete Grey	RAL 8022 Black Brown
RAL 6020 Chrome Green	RAL 7024 Graphite Grey	RAL 8023 Orange Brown
RAL 6021 Pale Green	RAL 7026 Granite Grey	RAL 8024 Beige Brown
RAL 6022 Olive Drab	RAL 7030 Stone Grey	RAL 8025 Pale Brown
RAL 6024 Traffic Green	RAL 7031 Blue Grey	RAL 8028 Terra Brown
RAL 6025 Fern Green	RAL 7032 Pebble Grey	RAL 9001 Cream
RAL 6026 Opal Green	RAL 7033 Cement Grey	RAL 9002 Grey White
RAL 6027 Light Green	RAL 7034 Yellow Grey	RAL 9003 Signal White
RAL 6028 Pine Green	RAL 7035 Light Grey	RAL 9004 Signal Black
RAL 6029 Mint Green	RAL 7036 Platinum Grey	RAL 9005 Jet Black
RAL 6032 Signal Green	RAL 7037 Dusty Grey	RAL 9010 Pure White
RAL 6033 Mint Turquoise	RAL 7038 Agate Grey	RAL 9011 Graphiack
RAL 6034 Pastel Turquoise	RAL 7039 Quartz Grey	RAL 9016 Traffic White
RAL 6035 Pearl Green	RAL 7040 Window Grey	RAL 9017 Traffic Black
RAL 7000 Squirrel Grey	RAL 7042 Traffic Grey A	RAL 9018 Papyrus White
RAL 7001 Silver Grey	RAL 7043 Traffic Grey B	

Other Available Color Chart:
 1. PANTONE (1690 kinds of colors);
 2. FRD (360 kinds of colors).

Common Gauge Size And Diameter Comparison List

Gauge No.	SWG (British System)		BWG (Birmingham)		BG		AWG (American System)	
	inch	mm	inch	mm	inch	mm	inch	mm
7/0	0.5	12.7			0.6666	16.932		
6/0	0.464	11.786			0.625	15.875	0.58	14.732
5/0	0.432	10.973	0.5	12.7	0.5883	14.943	0.5165	13.119
4/0	0.4	10.16	0.454	11.532	0.5416	13.757	0.46	11.684
3/0	0.372	9.449	0.425	10.795	0.5	12.7	0.4096	10.404
2/0	0.348	8.839	0.38	9.625	0.4452	11.308	0.3648	9.266
0	0.324	8.230	0.340	8.639	0.3954	10.069	0.3249	8.252
1	0.300	7.620	0.300	7.620	0.3532	8.971	0.2893	7.348
2	0.276	7.010	0.284	7.214	0.3147	7.993	0.2576	6.544
3	0.252	6.401	0.259	6.579	0.2804	7.122	0.2294	5.827
4	0.232	5.893	0.238	6.045	0.2500	6.350	0.2043	5.189
5	0.212	5.385	0.220	5.588	0.2225	5.652	0.1819	4.621
6	0.192	4.877	0.203	5.156	0.1981	5.032	0.1620	4.115
7	0.176	4.470	0.180	4.572	0.1764	4.481	0.1443	3.665
8	0.160	4.046	0.165	4.191	0.1570	3.988	0.1285	3.264
9	0.144	3.658	0.148	3.759	0.1398	3.551	0.1144	2.906
10	0.128	3.215	0.134	3.404	0.1250	3.175	0.1019	2.588
11	0.116	2.946	0.120	3.048	0.1113	2.827	0.0907	2.305
12	0.104	2.642	0.109	2.769	0.0991	2.517	0.0808	2.053
13	0.092	2.337	0.095	2.413	0.0882	2.240	0.0720	1.828
14	0.080	2.032	0.083	2.108	0.0785	1.994	0.0641	1.628
15	0.072	1.829	0.072	1.829	0.0699	1.775	0.0571	1.450
16	0.064	1.626	0.065	1.651	0.0625	1.588	0.0508	1.291
17	0.056	1.422	0.058	1.473	0.0556	1.412	0.0453	1.150
18	0.048	1.219	0.049	1.245	0.0495	1.257	0.0403	1.024
19	0.040	1.016	0.042	1.067	0.0440	1.118	0.0359	0.912
20	0.036	0.914	0.035	0.889	0.0392	0.996	0.0320	0.812
21	0.032	0.813	0.032	0.813	0.0349	0.887	0.0285	0.723
22	0.0280	0.711	0.028	0.711	0.03125	0.749	0.02535	0.644
23	0.0240	0.610	0.025	0.635	0.02782	0.707	0.02256	0.573
24	0.0220	0.559	0.022	0.559	0.02476	0.629	0.02011	0.511
25	0.0200	0.508	0.020	0.508	0.02204	0.560	0.01791	0.455
26	0.0180	0.457	0.018	0.457	0.01961	0.498	0.01594	0.405
27	0.0164	0.417	0.016	0.406	0.01745	0.443	0.01420	0.361
28	0.0148	0.376	0.014	0.356	0.01562	0.397	0.01264	0.321
29	0.0136	0.345	0.013	0.330	0.01390	0.353	0.01126	0.286
30	0.0124	0.315	0.012	0.305	0.01230	0.312	0.01003	0.255
31	0.0116	0.295	0.010	0.254	0.01100	0.27	0.00893	0.227
32	0.0108	0.274	0.009	0.229	0.00980	0.249	0.00795	0.202
33	0.0100	0.254	0.008	0.203	0.00870	0.221	0.00708	0.180
34	0.0092	0.234	0.007	0.178	0.00770	0.196	0.00630	0.160
35	0.0084	0.213	0.005	0.127	0.00690	0.175	0.00561	0.143
36	0.0076	0.193	0.004	0.102	0.00610	0.155	0.00500	0.127
37	0.0068	0.173			0.00540	0.137	0.00445	0.113
38	0.0060	0.152			0.00480	0.122	0.00396	0.101
39	0.0052	0.132			0.00430	0.109	0.00353	0.090
40	0.0048	0.122			0.00386	0.098	0.00314	0.080
41	0.0044	0.112			0.00343	0.087	0.00280	0.071
42	0.0040	0.102			0.00306	0.078	0.00249	0.063
43	0.0036	0.091			0.00272	0.069	0.00222	0.056
44	0.0032	0.081			0.00242	0.061	0.00198	0.050
45	0.0028	0.071			0.00215	0.055	0.00176	0.048
46	0.0024	0.061			0.00192	0.049	0.00157	0.040
47	0.0020	0.051			0.00170	0.043	0.00140	0.035
48	0.0016	0.041			0.00152	0.039	0.00124	0.032
49	0.0012	0.030			0.00135	0.034	0.00111	0.028
50	0.0010	0.025			0.00120	0.030	0.00099	0.025

Tube Specifications Imperial And Metric Comparison Table

O.D.	Schedule	Wall	I.D.	O.D.	Schedule	Wall	I.D.	O.D.	Schedule	Wall	I.D.
1/8" 10.3mm	10S	1.24	7.80	1-1/2" 48.3mm	5S	1.65	44.96	5" 141.3mm	160	15.88	109.6
	40ST, 40S	1.73	6.83		10S	2.77	42.76		XX	19.05	103.2
	80SX, 80S	2.41	5.46		40ST, 40S	3.68	40.89		5S	2.77	135.9
1/4" 13.7mm	10S	1.65	10.41	2" 60.3mm	80ST, 80S	5.08	38.10	6" 168.3mm	10S	3.40	134.5
	40ST, 40S	2.24	9.25		160	6.35	33.99		40ST, 40S	6.55	128.2
	80SX, 80S	3.02	7.67		XX	10.16	27.94		80ST, 80S	9.53	122.3
3/8" 17.1mm	10S	1.65	13.84	2-1/2" 73mm	5S	1.65	57.02	8" 219.1mm	120	12.70	115.9
	40ST, 40S	2.31	12.52		10S	2.77	54.79		160	15.88	109.6
	80SX, 80S	3.20	10.74		40ST, 40S	3.91	52.50		XX	19.05	103.2
1/2" 21.3mm	5S	1.65	18.03	3" 89mm	80SX, 80S	5.54	49.25	10"	5S	2.77	162.7
	10S	2.11	17.12		160	8.74	42.85		10S	3.40	161.5
	40ST, 40S	2.87	15.80		XX	11.07	38.18		40ST, 40S	7.11	154.1
3/4" 26.7mm	80SX, 80S	3.91	13.87	3-1/2" 101.6mm	5S	2.11	68.81	12"	80ST, 80S	10.97	146.3
	5S	1.65	11.79		10S	3.05	66.93		120	14.27	139.7
	10S	2.11	11.72		XX	7.82	6.40		160	18.26	136.7
1" 33.4mm	5S	1.65	23.37	4" 114.3mm	80SX, 80S	7.01	59.00	14"	5S	2.77	213.5
	10S	2.11	22.45		160	9.53	53.98		10S	3.76	211.6
	40ST, 40S	2.87	22.45		XX	14.02	44.98		20	6.35	206.4
1-1/4" 42.2mm	80SX, 80S	3.91	18.85	3-1/2" 101.6mm	5S	2.11	84.68	16"	30	7.04	205.0
	160	5.56	15.54		10S	3.05	82.80		40ST, 40S	8.18	202.7
	XX	7.82	11.02		40ST, 40S	5.49	77.93		60	10.31	198.5
1-1/4" 42.2mm	5S	1.65	30.10	4" 114.3mm	80SX, 80S	7.62	73.66	18"	80ST, 80S	12.70	193.7
	10S	2.77	27.86		160	11.13	66.65		100	15.09	188.9
	40ST, 40S	3.38	26.64		XX	15.24	58.42		120	18.26	182.5
1-1/4" 42.2mm	80ST, 80S	4.55	24.31	4" 114.3mm	5S	2.11	97.38	20"	110	20.62	177.8
	160	6.35	20.70		10S	3.05	95.50		XX	22.23	174.6
	XX	9.09	15.21		40ST, 40S	5.74	90.12		160	23.01	173.1
1-1/4" 42.2mm	5S	1.65	38.86	4" 114.3mm	80SX, 80S	8.08	85.45	22"	160	23.01	173.1
	10S	2.77	36.63		5S	2.11	110.1				
	40ST, 40S	3.56	35.05		10S	3.05	108.2				
1-1/4" 42.2mm	80ST, 80S	4.85	32.46	4" 114.3mm	40ST, 40S	6.02	102.3				
	160	6.35	29.46		80ST, 80S	8.56	97.20				
	XX	9.70	22.76		120	12.7	115.9				

Conversion Tables

长度 Length	1千米(km) = 0.612英里(mile)	1米(m) = 3.281英尺(ft) = 1.094码(yd)	1厘米(cm) = 0.394英寸(in)
	1英里(mile) = 1.609千米(km)	1英尺(ft) = 0.3048米(m)	1英寸(in) = 2.54厘米(cm)
	1海里(n mile) = 1.852千米(km)	1码(yd) = 0.9144米(m)	1英尺(ft) = 12英寸(in)
	1码(yd) = 3英尺(ft)	1英里(mile) = 5280英尺(ft)	1海里(n mile) = 1.1516英里(mile)
质量 Quality	1吨(t)1000千克(kg) = 2205磅(lb) = 1.102短吨(sh.ton) = 0.934长吨(long.ton)	1千克(kg) = 2.205磅(lb)	1短吨(sh.ton) = 0.907吨(t) = 2000磅(lb)
	1长吨(long.ton) = 1.016吨(t)	1磅(lb) = 0.454千克(kg)	1盎司(oz) = 28.350克(g)
压力 Peasure	1兆帕(Mpa) = 145磅/英寸 ² (psi) = 10.2千克/厘米 ² (kg/cm ²) = 10巴(bar) = 9.8大气压(at m)	1磅/英寸 ² (psi) = 0.006895兆帕(Mpa) = 0.0703千克/厘米 ² (kg/cm ²) = 0.0689巴(bar) = 0.068大气压(at m)	1巴(bar) = 0.1兆帕(Mpa) = 14.503磅/英寸 ² (psi) = 1.0197千克/厘米 ² (kg/cm ²) = 0.987大气压(at m)
	1大气压(at m) = 0.101325兆帕(Mpa) = 14.696磅/英寸 ² (psi) = 1.0333千克/厘米 ² (kg/cm ²) = 1.0133巴(bar)		
面积 Area	1平方公里(km ²) = 100公顷(ha) = 247.1英亩(acre) = 0.386平方英里(mile ²)	1平方米(m ²) = 10.764平方英尺(ft ²)	1公亩(acre) = 100平方米(m ²)
	1公顷(ha) = 1000平方米(m ²) = 2.471英亩(acre)	1平方英里(mile ²) = 2.590平方公里(km ²)	1英亩(acre) 0.4047公顷(ha) = 40.47 x 10 ⁻⁹ 平方公里(km ²) = 4047平方米(m ²)
	1平方英尺(ft ²) = 0.093平方米(m ²)	1平方英寸(in ²) = 6.452平方厘米(cm ²)	1平方码(yd ²) = 0.8361平方米(m ²)
体积 volume	1立方米(m ³) = 1000升(liter) = 35.315立方英尺(ft ³) = 6.290桶(bbl)	1立方英尺(ft ³) = 0.0283立方米(m ³) = 28.317升(l)	1000立方英尺(mcf) = 28.317立方米(m ³)
	1百万立方英尺(MMcf) = 2.8317万立方米(m ³)	10亿立方英尺(bcf) = 2831.7万立方米(m ³)	1万亿立方英尺(tcf) = 283.17亿立方米(m ³)
	1立方英尺(in ³) = 16.3871立方厘米(cm ³)	1英亩·英尺 = 1234万立方米(m ³)	1桶(bbl) = 0.159立方米(m ³) = 42美加仑
	1美加仑(gal) = 3.785升(l)	1美夸脱(qt) = 0.946升(l)	1美品脱(pt) = 0.473升(l)
	1美吉尔(gi) = 0.118升(l)	1美加仑(gal) = 4.546升(l)	
力 Force	1牛顿(N) = 0.225磅力(lbf) = 0.102千克力(kgf)	1千克力(kgf) = 9.81牛(N)	1磅力(lbf) = 4.45牛(N)
	1达因(dyn)10 ⁻⁵ 牛(N)		
速度 Speed	1英尺/秒(ft/s) = 0.3048米/秒(m/s)	1英里/秒(mile/h) = 0.44704米/秒(m/s)	